

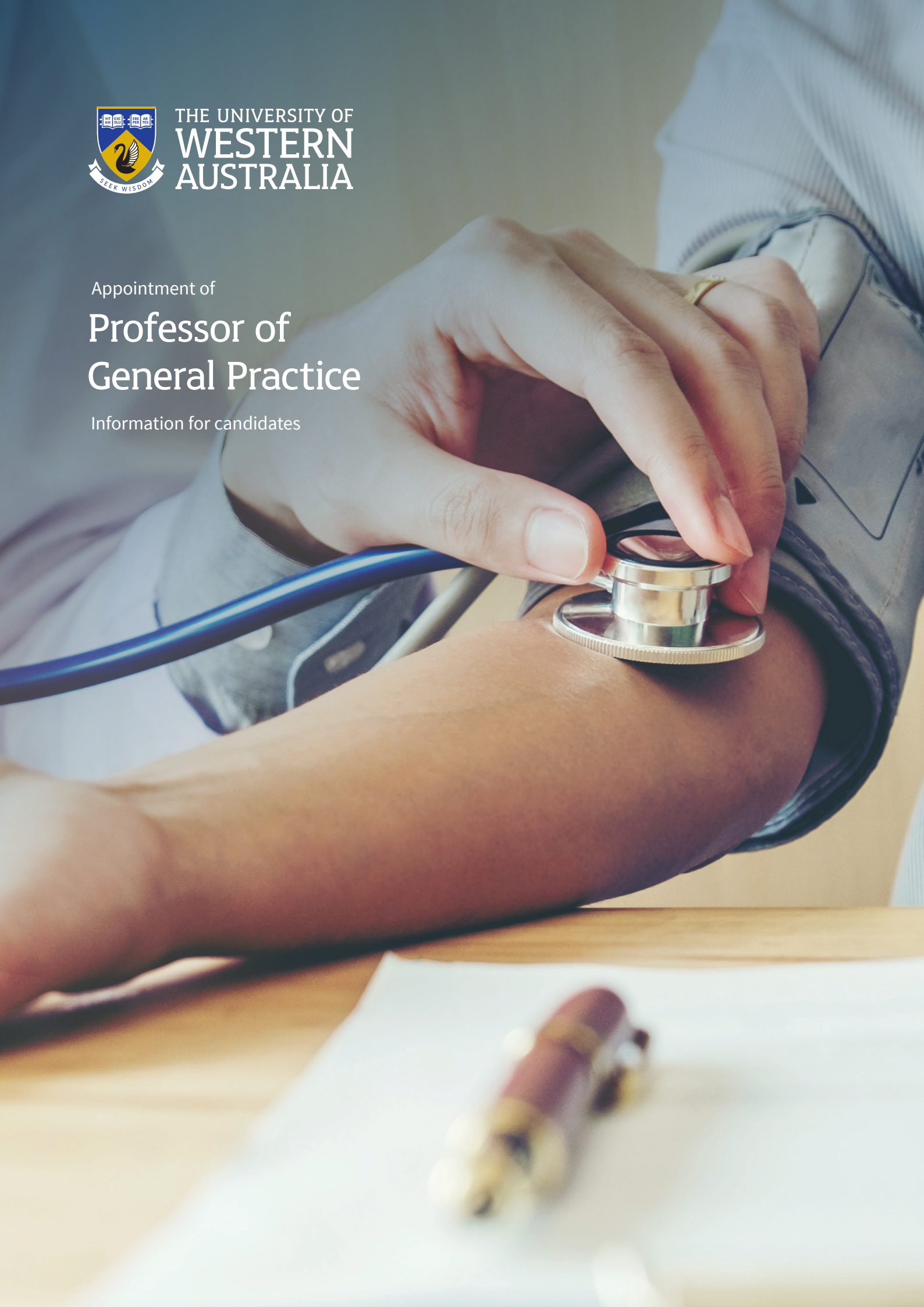


THE UNIVERSITY OF
**WESTERN
AUSTRALIA**

Appointment of

Professor of General Practice

Information for candidates





Thank you for
your interest in the
position of Professor
of General Practice
at The University of
Western Australia
(UWA).

Welcome

Thank you for your interest in the position of Professor of General Practice at The University of Western Australia (UWA).

It's an exciting opportunity to work with an institution at the most exciting and dynamic time in its history. With the University's Vision 2030 identifying the best ways to build on our strong reputation for excellence in teaching, learning and research, UWA is set to become an energetic centre for innovation, inspiring future students, staff and stakeholders alike to make a global impact.

Joining UWA will put you at the forefront of excellence, where you can challenge convention and make the most of unlimited possibilities. It's not just one of the top 100 universities in the world, it's an environment in which you can make a real difference – and encourage others to do the same.

We offer access to an exceptional support network committed to creating change, from membership in the Group of Eight – a coalition of leading research-intensive Australian universities – to colleagues who are academic leaders in the broadest sense, having established international reputations as outstanding teachers and researchers.

We look forward to hearing from like-minded candidates.

D Freshwater

Professor Dawn Freshwater
Vice-Chancellor



The University of Western Australia

At UWA, you can work alongside dynamic and forward-thinking colleagues who, like you, are determined to drive innovation.

The University is in the top 100 universities in the world and is one of Australia's most respected research institutions. We operate more than 130 research and training centres, and enjoy a broad range of successful industry partnerships. The strength of our research culture means we attract high levels of competitive funding, and receive roughly 80 per cent of all research funding to Western Australian universities each year.

UWA is 91st in the 2019 QS World University Rankings, climbing seven places in the last three years, and has maintained a perfect score of 100 in the International Faculty ratio (measuring the number of international staff per 100 faculty members). The Academic Ranking of World Universities 2018 places us 93rd, while the Times Higher Education World University Rankings rates us 134th globally. In the Good Universities Guide 2019 we gained a five-star rating in Student Retention, and maintained our five-star rating for Student-Teacher Ratio and Student Demand.

At UWA, we help people make the most of the possibilities presented to them. We are a community driven by a desire to make the most of our collective potential and to contribute to the world's advancement. Join us and pursue your ambitions.

uwa.edu.au



Vision

To become recognised as one of the world's top 50 universities by 2050.

Mission

To provide world-class education, research and community engagement for the advancement of prosperity and welfare of our communities.

University governance and management

The University is governed by the Senate, comprising up to 17 members from a range of backgrounds including community, staff, students and graduates.

Chaired by the Chancellor, the Hon. Robert French, the key roles of the Senate are:

- providing a broad overview of strategic directions in the University
- overseeing corporate governance
- performance monitoring
- taking legislative responsibility, and
- supporting, guiding and monitoring the performance of the Vice-Chancellor

Key stats

Student enrolments 2018	23,765
Total staff (FTE) 2018	3,306
Research publications 2018	4,563



Key institutional networks

Group of Eight

The Group of Eight is a coalition of leading Australian universities that advocate intensive research and comprehensive general and professional education.

go8.edu.au

Matariki Network of Universities

This international group of seven universities across seven nations focuses on strong links between research and undergraduate teaching, promoting international best practice in research and education.

matarikinetwork.org

Worldwide Universities Network

The major issues facing our planet are so great that no single institution or organisation can address them alone. The WUN brings together world-leading academic partners to address these global challenges.

wun.ac.uk

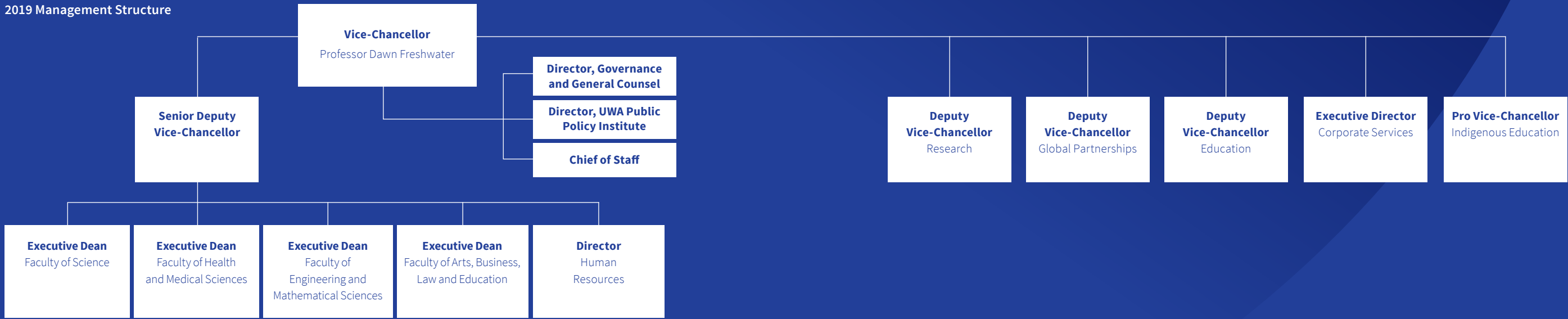
Australia Africa Universities Network

The Australia Africa Universities Network (AAUN) is a group of leading universities in Australia and Africa, connecting researchers and academics through institutional partnerships in order to address challenges facing both continents.

aaun.edu.au



2019 Management Structure





UWA Medical School

The Medical School is one of five schools in the Faculty of Health and Medical Sciences at The University of Western Australia. There are 240 students in each year group, all of whom rotate through General Practice in each clinical year. The Medical School delivers a postgraduate four-year Doctor of Medicine (MD) program and has a renowned experimental and clinical research program.

The ongoing focus of the UWA Medical School is threefold:

- Educational programs, with the MD program at the core.
- Research in the field of health and medicine which ranges from basic discovery research to clinical translational research (including clinical trials).
- Community and health sector engagement and service.

The Medical School brings together 10 clinical disciplines called divisions, all of which contribute to teaching the MD. The divisions are:

- | | |
|------------------------------|-------------------------------------|
| • Emergency Medicine | • Pathology and Laboratory Medicine |
| • General Practice | • Psychiatry |
| • Internal Medicine | • Rural Clinical School |
| • MD Education Unit | • Surgery |
| • Obstetrics and Gynaecology | |
| • Paediatrics | |

There are also divisions specifically involved with organisation and governance of the MD program, which include the MD Education Unit, the Centre for Aboriginal Medical and Dental Health, and the Rural Clinical School of WA.

Clinical Medicine at UWA is currently ranked 39th by the Academic Ranking of World Universities. A medical research team from the UWA Medical School and School of Biomedical Sciences won the 2018 Australian Museum Eureka Prize for Innovative Use of Technology for developing an automated method for rapid leukaemia detection. The method they have developed, named immuno-flowFISH, enables the chromosomes and the whole leukaemia cell to be seen using a microscope built into the instrument used for this test.

Nobel Prize Laureate Professor Barry Marshall, a medicine graduate and current staff member, worked with a team of UWA researchers and recently won the top honour in the WA Innovator of the Year Awards for the development of an acoustic belt that listens, records and analyses gut noises linked to gut disorders for faster and more effective diagnosis.

Professor Christobel Saunders, Professor of Surgical Oncology at the UWA Medical School and consultant surgeon, has been a driving force behind innovation in the development of new technologies, including the microscope-in-a-needle project, and has contributed substantially to clinical aspects of breast cancer research and treatment. Professor Saunders' work has informed government policy and she is also heavily involved in mentoring the next generation of female leaders and helping them understand the huge opportunities offered by a career in STEM. In 2018 she was inducted into the WA Women's Hall of Fame.

Professor Anna Nowak, an internationally recognised UWA researcher specialising in asbestos-related diseases, was named Cancer Council Western Australia's WA Cancer Researcher of the Year. The award was in recognition of Professor Nowak's dedication to bettering the lives of WA mesothelioma patients and mentoring WA's next generation of cancer researchers.

UWA's Medical School brings together the brightest students, experienced clinicians and committed researchers to unlock the greatest health challenges of our day. The Medical School will continue to deliver modern, sought-after, research-led education with the primary goal to advance the health and welfare of society through world-class student education, research and community engagement. Key themes of 'Lifelong Health', 'Genes in Society' and 'Chronic Diseases' will focus priorities in research and the Medical School's expertise in the following clinical areas will continue to be a priority for the School:

- cancer
- cardiometabolic medicine
- infection and immunity
- ageing and regenerative medicine
- maternal and developmental health
- rural, remote and Indigenous health

Division of General Practice

The Department of General Practice was formed in 1977, 20 years after the establishment of the UWA Medical School. This was part of a worldwide trend to broaden the horizons of medical education by exposing students to the practice of medicine outside teaching hospitals. The UWA Chair of General Practice was the first-named Chair of General Practice in Australia. The Division of General Practice is within the Medical School, one of five schools in the Faculty of Health and Medical Sciences.

Teaching

The UWA postgraduate entry Doctor of Medicine (MD) program was established in 2014, with the first cohort graduating in 2017. The MD has an integrated curriculum, with vertical and horizontal integration of medical sciences and clinical content in the three clinical years of the course.

Academics in the division of General Practice teach in years two, three and four of the program. The General Practice curriculum emphasises the essential knowledge and skills integral for general practice to provide quality care to individuals and families across the lifespan from a broad range of sociocultural contexts. Rural general practice, Aboriginal health and emergency care in rural areas are strong features of the course. The general practice teaching includes community-based clinical placements, multidisciplinary tutorials, simulated patient consultations, and seminars. Students focus on formulating diagnostic hypotheses and problem lists for common primary care presentations.

Research

The division of General Practice at UWA has been highly influential in research in the areas of Aboriginal health, rural health, chronic disease management and early diagnosis of cancer in primary care. Currently areas of research include patient-centred health, health-related quality of life, mental health including in mothers in the perinatal period, chronic pain and medical education. Research in medical education includes assessing the impact of education on attitudinal change to drug and alcohol disorders, mindfulness training for medical students and addressing the culture of bullying in medical schools. A major research group within the division of General Practice, the 'Collaborative for Healthcare Analysis and Statistical Modelling', analyses the health outcomes of drivers for the provision of equitable and accessible healthcare. General Practice offers a number of opportunities for postgraduate research training by coursework and research.

Community service

Academics in the division of General Practice provide input to advisory committees and expert reference groups of both government and non-government organisations, particularly in areas of medical education, primary care research, facilitation of health service frameworks and chronic disease management. Our academics are also actively involved with professional bodies such as the Australian Medical Association, Royal Australian College of General Practitioners, WA Primary Health Alliance, the Australian Association of Academic Primary Care and Postgraduate Medical Council of WA.



Western Australia and Perth

Western Australia is the second-largest state in the world, with a sunny climate that has resulted in some of the globe's most biodiverse landscapes, from a Mediterranean climate in the south and desert in the east, to tropical conditions in the north.

As well as natural beauty in the shape of magnificent beaches, beautiful wineries and one of the world's largest inner-city parks – Kings Park – Perth offers an eclectic mix of restaurants, shopping and cultural experiences. These include the Perth Festival, which was founded by The University of Western Australia and is the longest-running international arts festival in the country, as well as being one of the most exciting celebrations on the world's cultural calendar.

uwa.edu.au/perthfestival

Role, key responsibilities and selection criteria

Role

The Professor of General Practice is expected to provide a visionary perspective to the discipline, academic leadership in teaching, research and policy development, and be eligible and committed to practice as a general practitioner. The Professor of General Practice would be eligible for the position of Head of the Division of General Practice.





Selection criteria

Qualifications

- Registrable as a medical practitioner with the Australian Health Practitioner Regulation Agency (AHPRA).
- Fellowship of the Royal Australian College of General Practitioners, Australian College of Rural and Remote Medicine or a recognised equivalent professional college.
- A PhD or equivalent higher degree by research (eg. MD) is essential.

Clinical service

- Commitment and eligibility to work concurrently in clinical general practice in the Perth area.

Leadership and teaching

- Demonstrated considerable experience in clinical general practice.
- Evidence of a strong personal contribution and commitment to high-quality teaching at all levels.
- Experience in the development of educational policy and curriculum within the discipline.
- Capacity to provide academic leadership and maintain high academic standards in all facets of academic life.
- Demonstrated ability to represent the discipline within the University and more broadly.
- Exemplary interpersonal and organisational skills and the ability to communicate effectively at all levels.

Research and scholarship

- Academic leadership and personal commitment to scholarly research.
- Evidence of quality research output and communication of that output to others.
- Ability to attract research funding.
- Ability to foster research groups and individuals, including guiding general practitioners who wish to conduct research.
- Experience in the supervision of postgraduate research students.
- Experience in the development of research policy and the ability to link research to clinical practice and teaching.

Key priorities facing the Professor of General Practice over the first 12–18 months

- Contribute to the leadership and management of the Division of General Practice and the Medical School, ensuring the development of a positive academic working environment, aligned to the priorities of both the University and Faculty.
- Develop and foster research activity in the General Practice, the School and its associated clinical sites.
- Engage and mentor colleagues at all levels in research (and teaching) activity, resulting in an enthusiastic, collaborative and engaged culture.
- Develop appropriate new research groups. Expected outputs will include increased research performance and capability, broader research income, growing higher degree research students, demonstrated clinical and academic collaboration, and multidisciplinary interaction.
- Contribute to leadership and teaching in the MD curriculum.
- Promote internally and externally the work of the Division of General Practice, and continue to develop partnerships and relationships with relevant stakeholders across the University, its clinical partners, and elsewhere.

Conditions of employment

The appointment will be tenurable and is subject to annual performance reviews.

An attractive and flexibly constructed remuneration package will be negotiated and will include:

- professorial salary and clinical loading
- employer contribution to superannuation of 17% (standard employee contribution is 7%)
- eligibility for sabbatical leave
- generous leave provisions and salary packaging
- relocation assistance including airfares (if applicable)

Applications

Thank you for your interest. If you wish to proceed, the following information will assist you with your application.

Your application must include the following:

- a statement that clearly demonstrates the extent to which you satisfy each of the selection criteria
- evidence of the impact of your work beyond academia, such as through contributions made to the economy, society, culture, public policy or services, health, the environment or quality of life
- a curriculum vitae that provides your personal details, qualifications and work history
- a list of publications
- the name, email, mailing address and telephone contact details of three referees who can be contacted for a confidential report

Please note that your permission will be sought before referees are contacted.

The University of Western Australia provides visa sponsorship for international appointees.

Lodging your application

Applications must be submitted online at: jobs.uwa.edu.au/executive

If you wish to discuss the position in confidence please contact:

Professor Wendy Erber
Executive Dean
Faculty of Health and Medical Sciences
Tel: +61 8 6457 2325
Email: wendy.erber@uwa.edu.au

Dr Brendan McQuillan
Head of School, UWA Medical School
Faculty of Health and Medical Sciences
Tel: +61 8 6151 1052
Email: brendan.mcquillan@uwa.edu.au

The closing date for applications is Thursday, 20 June 2019



The University of Western Australia
35 Stirling Highway
Crawley WA 6009