

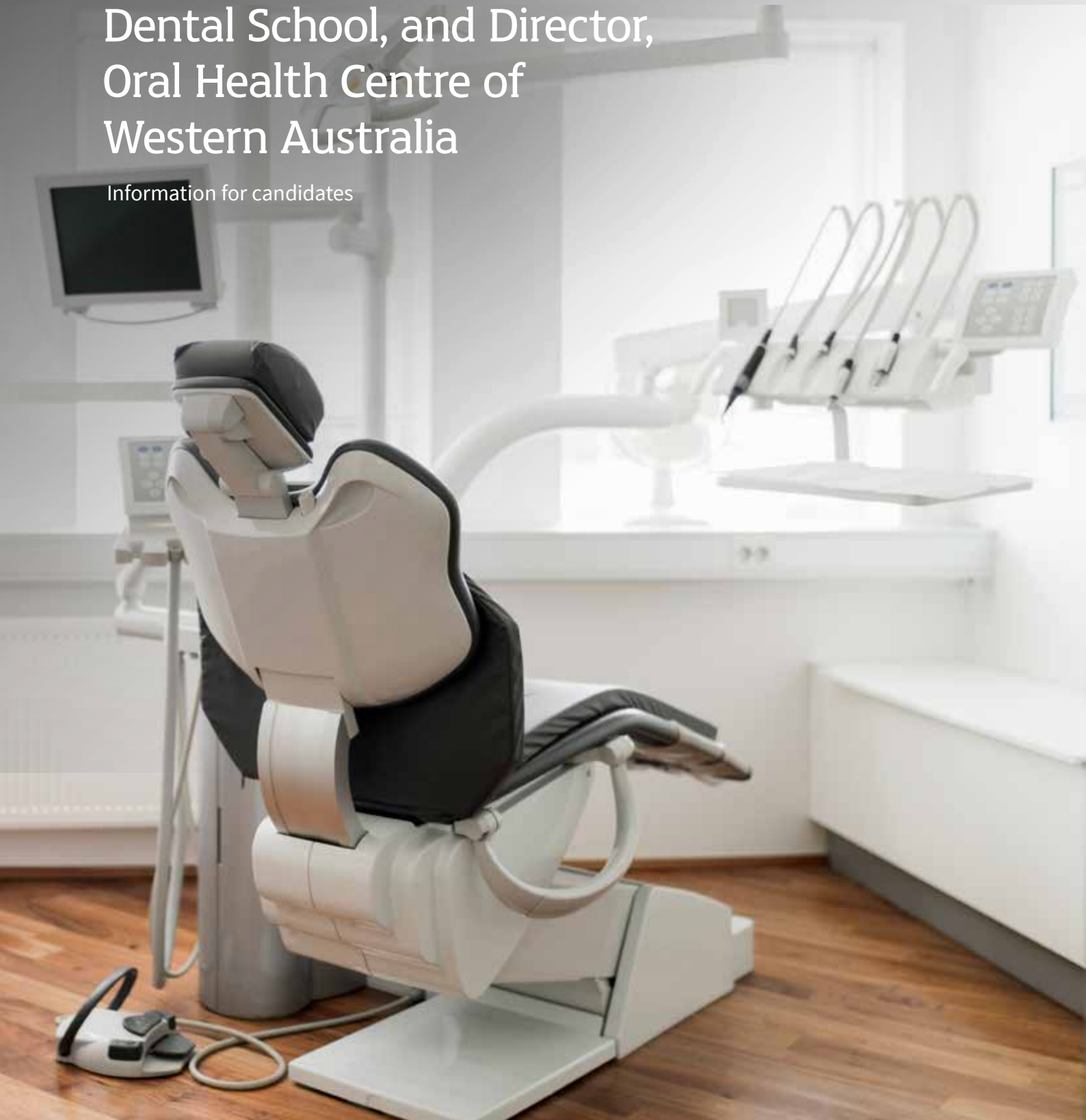


THE UNIVERSITY OF  
**WESTERN  
AUSTRALIA**

Appointment of

# Head of School/Dean, Dental School, and Director, Oral Health Centre of Western Australia

Information for candidates





Thank you for your interest in the joint position of Head of School/Dean, Dental School, and Director, Oral Health Centre of Western Australia at The University of Western Australia.

# Welcome

Thank you for your interest in the joint position of Head of School/Dean, Dental School, and Director, Oral Health Centre of Western Australia at The University of Western Australia (UWA).

It's an exciting opportunity to work with an institution at the most exciting and dynamic time in its history. With the University's vision for the next decade recently launched, UWA 2030 identifies the best ways to build on our strong reputation for excellence in teaching, learning and research. UWA is set to become an energetic centre for innovation, inspiring future students, staff and stakeholders alike to make a global impact.

Joining UWA will put you at the forefront of excellence, where you can challenge convention and make the most of unlimited possibilities. It's not just one of the Top 100 universities in the world, it's an environment in which you can make a real difference – and encourage others to do the same.

We offer access to an exceptional support network committed to creating change, from membership in the Group of Eight – a coalition of leading research-intensive Australian universities – to colleagues who are academic leaders in the broadest sense, having established international reputations as outstanding teachers and researchers.

We look forward to hearing from likeminded candidates.

*D Freshwater*

Professor Dawn Freshwater  
Vice-Chancellor



# The University of Western Australia

**At UWA, you can work alongside dynamic and forward-thinking colleagues who, like you, are determined to drive innovation.**

The University is in the Top 100 universities in the world and is one of Australia's most respected research institutions. We operate more than 130 research and training centres, and enjoy a broad range of successful industry partnerships. The strength of our research culture means we attract high levels of competitive funding and receive roughly 80 per cent of all research funding to Western Australian universities each year.

UWA is 86th in the 2020 QS World University Rankings, climbing sixteen places in the last three years, and has maintained a perfect score of 100 in the International Faculty ratio (measuring the number of international staff per 100 faculty members). The Academic Ranking of World Universities 2018 places us 99th, while the Times Higher Education World University Rankings rates us 134th globally. In the Good Universities Guide 2019 we gained a five-star rating in Student Retention, and maintained our five-star rating for Student-Teacher Ratio and Student Demand.

At UWA, we help people make the most of the possibilities presented to them. We are a community driven by a desire to make the most of our collective potential and to contribute to the world's advancement. Join us and pursue your ambitions.

[uwa.edu.au](http://uwa.edu.au)





## Vision

Creating the next generation of global leaders through experience-rich education and world-leading, trustworthy research.



## Mission

To provide world-class education, research and community engagement for the advancement of prosperity and welfare of our communities.

# University governance and management

**The University is governed by the Senate, comprising up to 17 members from a range of backgrounds including community, staff, students and graduates.**

Chaired by the Chancellor, the Hon. Robert French, the key roles of the Senate are:

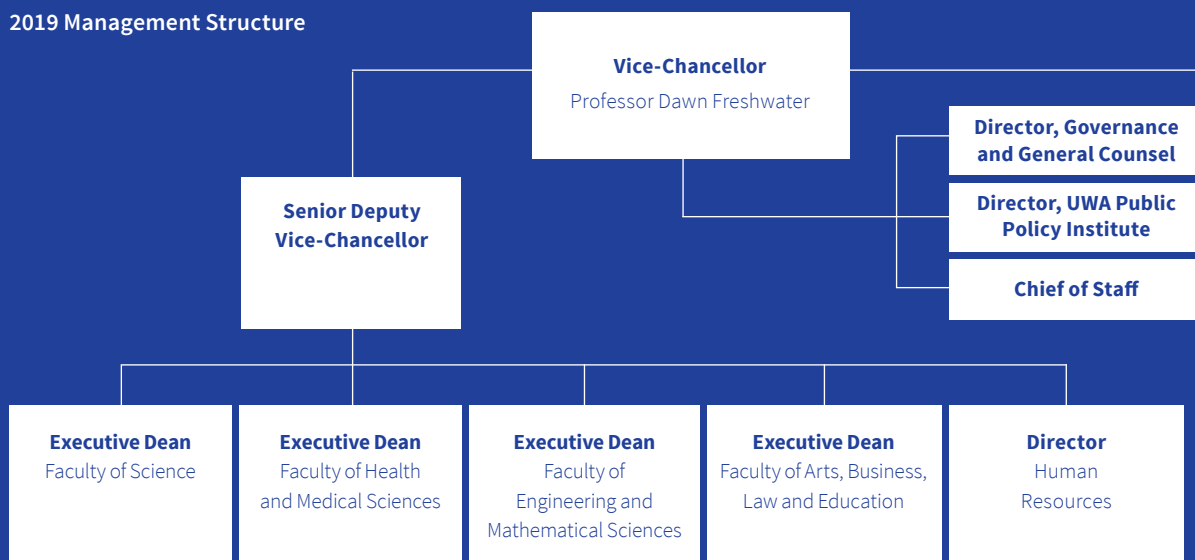
- providing a broad overview of strategic directions in the University
- overseeing corporate governance
- performance monitoring
- taking legislative responsibility
- supporting, guiding and monitoring the performance of the Vice-Chancellor

## Key stats

Student enrolments 2018	<b>23,765</b>
Total staff (FTE) 2018	<b>3,306</b>
Research publications 2018	<b>4,563</b>



## 2019 Management Structure



# Key institutional networks

## Group of Eight

The Group of Eight is a coalition of leading Australian universities that advocate intensive research and comprehensive general and professional education.

[go8.edu.au](http://go8.edu.au)

## Matariki Network of Universities

This international group of seven universities across seven nations focuses on strong links between research and undergraduate teaching, promoting international best practice in research and education.

[matarikinetwork.org](http://matarikinetwork.org)

## Worldwide Universities Network

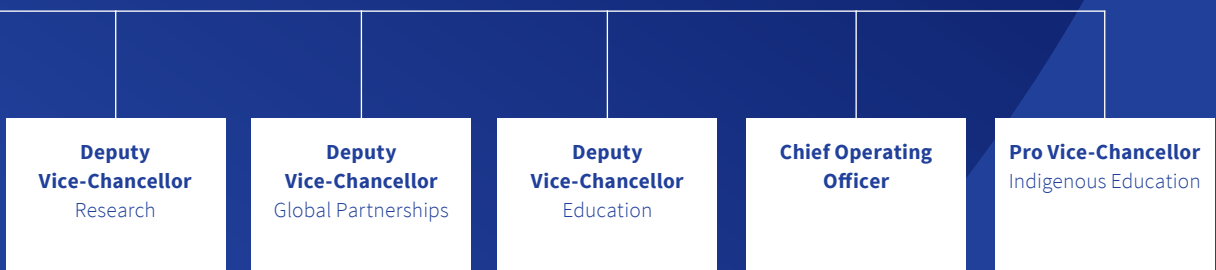
The major issues facing our planet are so great that no single institution or organisation can address them alone. The WUN brings together world-leading academic partners to address these global challenges.

[wun.ac.uk](http://wun.ac.uk)

## Australia Africa Universities Network

The Australia Africa Universities Network (AAUN) is a group of leading universities in Australia and Africa, connecting researchers and academics through institutional partnerships in order to address challenges facing both continents.

[aaun.edu.au](http://aaun.edu.au)



# Faculty of Health and Medical Sciences

The Faculty of Health and Medical Sciences is a large interdisciplinary health faculty which includes the Schools of Medicine, Dentistry, Allied Health, Biomedical Sciences, and Population and Global Health. The Faculty boasts some of The University of Western Australia's most outstanding researchers; our most notable being Professor Barry Marshall and Emeritus Professor Robin Warren who were awarded the 2005 Nobel Prize in Physiology or Medicine for their discovery of the bacterium *Helicobacter pylori* and its role in gastritis and peptic ulcer disease. This marvellous achievement, together with consistently being ranked in the top 75 in the world, highlights our international reputation and high global standing for research excellence. Our cutting-edge research is undertaken within each of the schools as well as the centres which it hosts.

The Faculty has a strong record of quality education and teaches a comprehensive program of undergraduate courses in the biomedical sciences as well as postgraduate coursework programs and research degrees. Our professional entry to practice degrees include medicine, dentistry, pharmacy, podiatric medicine and social work. We also offer an extensive range of postgraduate coursework and research courses in public health, clinical research, dental science, health professional education, clinical pathology, infectious diseases, rural and remote medicine, and neonatal and child health.

Our academics and students have access to high-quality and modern teaching facilities. The J Robin Warren Library has recently undergone significant refurbishment to generate a world-class technology-rich educational hub highly valued by students and staff and which meets their changing working styles.

Students also have access to a vibrant and dynamic facility with collaborative and individual learning spaces, a learning suite, comfortable work spaces and quiet rooms, together with an up-to-date book collection.

The Faculty comprises in excess of 400 full-time equivalent academic staff, including 80 Level E professorial appointments, and approximately 1,000 adjunct and clinical staff assisting with teaching and research. There is an equivalent full-time student load of 2,675 enrolled in a range of undergraduate majors and graduate degree programs.

[uwa.edu.au/health/home](http://uwa.edu.au/health/home)

# UWA Dental School

The UWA Dental School is WA's only tertiary dental training centre, offering aspiring and existing dentists a range of practical and innovative postgraduate courses in a high-tech dental teaching and learning facility.

The graduate Doctor of Dental Medicine (DMD) program extends over four years and is clinically focused with early clinical contact and exposure to research activity. The Doctor of Clinical Dentistry (DClinDent) postgraduate speciality training extends over three years, offering programs in Endodontics, Orthodontics, Periodontics, Prosthodontics, Paediatric Dentistry and Oral Medicine. These programs enrich the training environment at the School, and offer opportunities for advanced patient care.

The School operates the Oral Health Centre of WA (OHCWA), a centralised public tertiary referral centre and dental teaching hospital, where eligible patients are treated on behalf of the State Government of WA. OHCWA offers a full range of general and speciality dental services to the Western Australian community, and we are proud of the high standard of care provided by our clinicians, dental clinical assistants and laboratory technicians.

[uwa.edu.au/health/schools/dental-school](http://uwa.edu.au/health/schools/dental-school)





# The Oral Health Centre of Western Australia

The Oral Health Centre of Western Australia is a state-of-the-art dental teaching and learning facility united with an oral healthcare clinic, and the only institution in the State offering tertiary training in dentistry.

It provides dental services to eligible members of the public, which ensures students have access to suitable patients to develop the necessary skills and aptitudes of oral health practitioners.

UWA's Dental School believes students learn best when teaching and learning methods focus on student-centred approaches.

Students learn either by treating patients under close supervision by highly experienced and skilled tutors, or by observing general and specialist dentists treating a wide range of dental conditions.

The Oral Health Centre of Western Australia provides modern clinical facilities, laboratories with cutting-edge equipment, clinical teaching and computing facilities, as well as access to the broader facilities of UWA.

[uwa.edu.au/facilities/ohcwa](http://uwa.edu.au/facilities/ohcwa)



# Western Australia and Perth

Western Australia is the second-largest state in the world, with a sunny climate that has resulted in some of the globe's most biodiverse landscapes, from a Mediterranean climate in the south and desert in the east, to tropical conditions in the north.

As well as natural beauty in the shape of magnificent beaches, beautiful wineries and one of the world's largest inner-city parks – Kings Park – Perth offers an eclectic mix of restaurants, shopping and cultural experiences. These include the Perth Festival, which was founded by The University of Western Australia and is the longest-running international arts festival in the country, as well as being one of the most exciting celebrations on the world's cultural calendar.

[uwa.edu.au/perthfestival](http://uwa.edu.au/perthfestival)





# Role, key responsibilities and selection criteria

---

## Role

The Head of School/Dean, Dental School and Director, Oral Health Centre of Western Australia (OHCWA) is a joint role. The appointee will be responsible for providing academic leadership and coordination of the UWA Dental School and OHCWA. Whoever is appointed will also play a key role in the Faculty's leadership team and will be expected to work in accordance with the University's policies, procedures and values, promoting academic excellence through integrity, inclusiveness, professionalism and community.

The appointee will ensure the School maintains close links with the relevant professional, statutory and regulatory bodies and also ensure that the School meets the required quality, accreditation, training and development needs of the profession.

The appointee will be responsible for ensuring the students of the School have a positive educational and social experience whilst also ensuring their safety and welfare.



## Key responsibilities

- Provide clear vision and leadership to guide the School and OHCWA to achieve the highest standards
- Ensure the School's strategic and academic direction and priorities are determined in a collegial and consultative way that involves all academic staff, and students where relevant
- Develop and implement strategies for the continual academic development of the School including enhancing the education provided and the student experience
- Ensure the implementation of effective and efficient management policies and procedures in line with those of the University and Faculty
- Take responsibility to ensure that clear School and OHCWA objectives are set annually for all members of staff, and that appropriate resources are allocated in a balanced way which reflects School, OHCWA and Faculty priorities
- Oversee and coordinate the accreditation of all the School's educational programs and the accreditation of OHCWA as a health care facility
- Promote internationally competitive research in the School and ensure the implementation of effective policies and procedures for managing research
- Facilitate and promote the development of interdisciplinary activity within the Oral Health and General Health professions
- Enhance existing, and develop new, partnerships and alliances to promote the School nationally and internationally
- Foster effective engagement with the State Oral Health Advisory Council and the WA Department of Health
- Oversee and coordinate all matters related to the delivery of clinical dental services
- As a member of the Faculty leadership team, assist the Executive Dean with the general management of the Faculty and contribute directly to wider leadership within the University
- Together with the Associate Dean (Community and Engagement), engage with alumni and participate in community outreach activities
- Ensure the effective management of staff of the School and OHCWA, including their continuing professional development, promotion, induction, performance, engagement and consultancy
- Together with the School's Head of the Service Delivery Centre, establish effective health and safety management in the School, ensuring staff comply with legislated and University health and safety requirements, whilst also promoting an appropriate workplace environment to ensure the well-being of the staff and students

## Specific work capabilities (selection criteria)

The applicant must have:

- A qualification that is eligible for registration with the Dental Board of Australia and the applicant must be a Dentist
- A PhD (or equivalent) in a related field, and/or a higher degree (e.g. MDS/MSc/DCD) in a clinical dental speciality
- An internationally recognised track record through original research including high-quality publication outputs and evidence of research funding
- A commitment to high-quality teaching and continuous improvement of the student experience
- Experience in the development of high-quality dental curricula
- A commitment to high-quality supervision of higher-degree-by-research students
- The capacity to shape organisational culture, whilst also building a high-performing team and a collegial environment
- Experience in leadership within dentistry
- Outstanding interpersonal and communication skills, including a commitment to the principles of equity and diversity
- Strong leadership and academic credentials and standing within the dental profession

## Conditions of employment

The appointment will be for a fixed term period of five years with the prospect for renewal. An attractive and flexibly constructed remuneration package will include:

- Professorial salary
- Employer contribution to superannuation of 17%
- Annual leave of 20 working days per annum
- Long service leave
- Eligibility for sabbatical leave
- Visa sponsorship and relocation assistance where required

## Applications

**Thank you for your interest. If you wish to proceed, the following information will assist you with your application.**

Your application must include the following:

- a statement that clearly demonstrates the extent to which you satisfy each of the selection criteria
- evidence of the impact of your work beyond academia, such as through contributions made to the economy, society, culture, public policy or services, health, the environment or quality of life
- a curriculum vitae that provides your personal details, qualifications and work history
- a list of publications
- the names, email addresses, mailing addresses and telephone contact details of three referees who can be contacted for a confidential report

Please note that your permission will be sought before referees are contacted.

**The University of Western Australia provides visa sponsorship for international appointees.**

## Lodging your application

Applications must be submitted online at: [jobs.uwa.edu.au/executive](http://jobs.uwa.edu.au/executive)

**The closing date for applications is Wednesday, 16 October 2019**

If you wish to discuss the position in confidence please contact:

Professor Wendy Erber  
Executive Dean  
Faculty of Health and Medical Sciences  
Tel: + 61 8 6457 2325  
Email: [wendy.erber@uwa.edu.au](mailto:wendy.erber@uwa.edu.au)



THE UNIVERSITY OF  
**WESTERN  
AUSTRALIA**

---

The University of Western Australia  
35 Stirling Highway  
Crawley WA 6009