



THE UNIVERSITY OF
**WESTERN
AUSTRALIA**

Appointment of

Kimberley Foundation Ian Potter Chair in Rock Art

Information for candidates





Thank you for
your interest in the
position of Kimberley
Foundation Ian Potter
Chair in Rock Art at
The University of
Western Australia.

Welcome

Thank you for your interest in the position of Kimberley Foundation Ian Potter Chair in Rock Art at The University of Western Australia (UWA).

It's an exciting opportunity to work with an institution at the most exciting and dynamic time in its history. With the University's vision for the next decade recently launched, UWA 2030 identifies the best ways to build on our strong reputation for excellence in teaching, learning and research. UWA is set to become an energetic centre for innovation, inspiring future students, staff and stakeholders alike to make a global impact.

Joining UWA will put you at the forefront of excellence, where you can challenge convention and make the most of unlimited possibilities. It's not just one of the top 100 universities in the world, it's an environment in which you can make a real difference – and encourage others to do the same.

We offer access to an exceptional support network committed to creating change, from membership in the Group of Eight – a coalition of leading research-intensive Australian universities – to colleagues who are academic leaders in the broadest sense, having established international reputations as outstanding teachers and researchers.

We look forward to hearing from likeminded candidates.



Professor Dawn Freshwater
Vice-Chancellor



The University of Western Australia

At UWA, you can work alongside dynamic and forward-thinking colleagues who, like you, are determined to drive innovation.

The University is in the top 100 universities in the world and is one of Australia's most respected research institutions. We operate more than 130 research and training centres, and enjoy a broad range of successful industry partnerships. The strength of our research culture means we attract high levels of competitive funding, and receive roughly 80 per cent of all research funding to Western Australian universities each year.

UWA is 86th in the 2020 QS World University Rankings, climbing sixteen places in the last three years, and has maintained a perfect score of 100 in the International Faculty ratio (measuring the number of international staff per 100 faculty members). The Academic Ranking of World Universities 2018 places us 93rd, while the Times Higher Education World University Rankings rates us 134th globally. In the Good Universities Guide 2019 we gained a five-star rating in Student Retention, and maintained our five-star rating for Student-Teacher Ratio and Student Demand.

At UWA, we help people make the most of the possibilities presented to them. We are a community driven by a desire to make the most of our collective potential and to contribute to the world's advancement. Join us and pursue your ambitions.

uwa.edu.au





Vision

Creating the next generation of global leaders through experience-rich education and world-leading, trustworthy research.



Mission

To provide world-class education, research and community engagement for the advancement of prosperity and welfare of our communities.

University governance and management

The University is governed by the Senate, comprising up to 17 members from a range of backgrounds including community, staff, students and graduates.

Chaired by the Chancellor, the Hon. Robert French, the key roles of the Senate are:

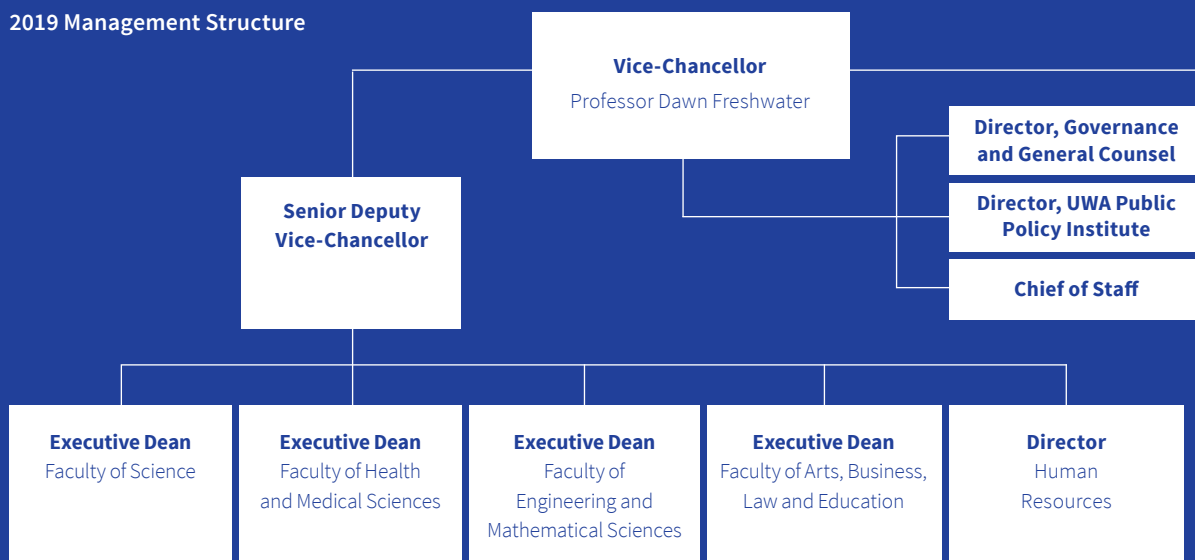
- providing a broad overview of strategic directions in the University
- overseeing corporate governance
- performance monitoring
- taking legislative responsibility
- supporting, guiding and monitoring the performance of the Vice-Chancellor

Key stats

Student enrolments 2018	23,765
Total staff (FTE) 2018	3,306
Research publications 2018	4,563



2019 Management Structure



Key institutional networks

Group of Eight

The Group of Eight is a coalition of leading Australian universities that advocate intensive research and comprehensive general and professional education.

go8.edu.au

Matariki Network of Universities

This international group of seven universities across seven nations focuses on strong links between research and undergraduate teaching, promoting international best practice in research and education.

matarikinetwork.org

Worldwide Universities Network

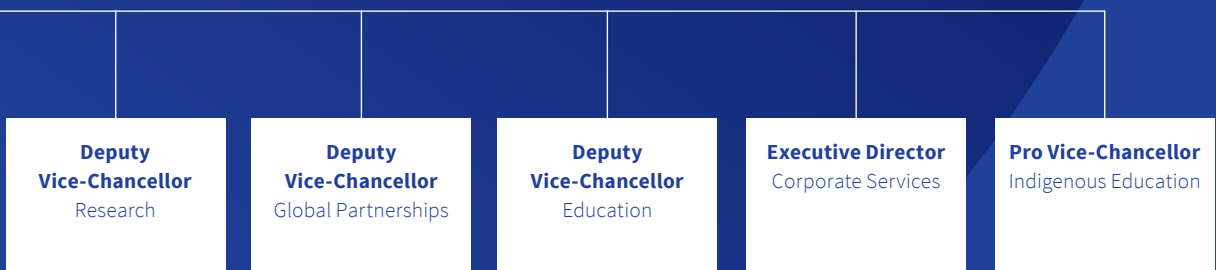
The major issues facing our planet are so great that no single institution or organisation can address them alone. The WUN brings together world-leading academic partners to address these global challenges.

wun.ac.uk

Australia Africa Universities Network

The Australia Africa Universities Network (AAUN) is a group of leading universities in Australia and Africa, connecting researchers and academics through institutional partnerships in order to address challenges facing both continents.

aaun.edu.au



Faculty of Arts, Business, Law and Education

The Faculty of Arts, Business, Law and Education (ABLE) brings together disciplines aiming to understand and enhance human societies, cultures and institutions. The Faculty involves world-leading expertise across a number of fields of academic scholarship, including business, design, education, humanities, law, music and social sciences.

It comprises seven schools that provide for disciplinary coherence and capitalise on emerging and existing cross-disciplinary opportunities in teaching, research and external engagement.

able.uwa.edu.au



The School of Social Sciences

The School of Social Sciences comprises a diverse range of disciplines, including Anthropology and Sociology, Archaeology, Asian Studies, Linguistics, Media and Communication, and Political Science and International Relations. It has a reputation for teaching excellence at both undergraduate and postgraduate level. The School offers 10 undergraduate majors in the Bachelor of Arts, and a growing number of Master's by coursework programs in areas such as International Relations, Heritage Studies, Public Policy and Strategic Communication.

The School has a vibrant research culture and hosts a number of research centres and clusters. These include the Centre for Rock Art Research and Management, Centre for Muslim States and Societies, Centre for Forensic Anthropology and the Migration, Mobilities and Belonging Research Cluster. The School is also closely linked to the UWA Public Policy Institute, the African Research and Engagement Centre, the US Asia Centre and the Berndt Museum of Anthropology. There is also a close engagement with community, industry and government, particularly in the areas of heritage management, migration studies, public policy and international affairs.

socialsciences.uwa.edu.au

The Centre for Rock Art Research and Management

The Centre for Rock Art Research and Management (CRAR+M) is a UWA centre of research excellence for integrated and collaborative research into Australian rock art, with an emphasis on Western Australia.

It also aspires to be a leader in rock art conservation and management by research-driven advocacy for its priceless heritage values. Rock art informs many other past and present Indigenous artistic practices, and cannot be studied in isolation. CRAR+M seeks to bring together Indigenous communities and multidisciplinary researchers (archaeologists, dating specialists, human geographers, anthropologists, Indigenous artists, and historians) to create a more holistic understanding and awareness of the cultural significance of Indigenous rock art. By examining various contexts and aspects associated with rock art, from both Indigenous and non-Indigenous perspectives, researchers can use Indigenous visual heritage to understand more about its role in the lives of Indigenous Australians.

Core values

The Centre's core values are:

- collaboration with Indigenous communities in a culturally respectful manner
- research of rock art throughout Australia
- public dissemination of rock art's values to the academic and broader community
- protection of rock art throughout Australia

uwa.edu.au/rock-art



Western Australia and Perth

Western Australia is the second-largest state in the world, with a sunny climate that has resulted in some of the globe's most biodiverse landscapes, from a Mediterranean climate in the south and desert in the east, to tropical conditions in the north.

As well as natural beauty in the shape of magnificent beaches, beautiful wineries and one of the world's largest inner-city parks – Kings Park – Perth offers an eclectic mix of restaurants, shopping and cultural experiences. These include the Perth Festival, which was founded by The University of Western Australia and is the longest-running international arts festival in the country, as well as being one of the most exciting celebrations on the world's cultural calendar.

uwa.edu.au/perthfestival





Role, key responsibilities and selection criteria

Role

The appointee will lead and develop rock art research in the Kimberley region of Western Australia. The position is primarily a research role and the person will be responsible for developing collaborative research programs, and for ensuring appropriate participation of, and collaboration with, Traditional Owners.

The principal area of this research should advance understanding of the duration, nature and context of Indigenous culture in the Kimberley, in order to contextualise and progress the study of the region's rock art.

The researcher will also be responsible for developing research training in rock art and related disciplinary fields, and for ensuring the results of this work are disseminated to the wider community.



Key responsibilities

- Development of a research program at the Centre for Rock Art Research and Management on Kimberley rock art
- Applying for external funds to support new research projects
- Establishing collaborations with Indigenous groups who own and manage the Indigenous sites and materials in the Kimberley
- Research training of postgraduate students in Kimberley rock art and related fields
- Dissemination of the research results in both academic and non-academic arenas
- Contributing to the undergraduate teaching program at UWA in areas related to Kimberley rock art
- Developing national and international relationships with other institutions and industry partners to further the research of the Centre for Rock Art Research and Management
- Maintaining a collaborative working relationship with key partners including the Kimberley Foundation Australia
- Other duties as directed



Selection criteria

Qualifications

- PhD in a discipline relevant to rock art research

Research and scholarship

Applicants will need to demonstrate an outstanding ability and/or record in relation to each of the following:

- rock art research
- capacity to develop collaborative projects with Indigenous stakeholders
- communication of research results to experts and wider communities
- track record in attracting research funding for projects from external sources and in successful completion of such projects
- fostering collaborative and productive research programs within the University and with other institutions nationally and internationally
- mentoring early career researchers
- supervision of postgraduate students
- creation of an independent interdisciplinary research program in the field of rock art and archaeology

Teaching

Applicants should have demonstrable capacity:

- to maintain academic standards and to develop educational policy and curriculum areas within rock art studies
- to supervise and participate in undergraduate units relevant to Kimberley rock art

Other

- Engage with the Kimberley Foundation Australia in accordance with the Memorandum of Agreement with The University of Western Australia.

Conditions of employment

- Tenurable subject to satisfactory performance
- Employer contribution to superannuation of 17%
- Annual leave of 20 working days per annum
- Long service leave
- Visa sponsorship
- Relocation assistance

Applications

Thank you for your interest. If you wish to proceed, the following information will assist you with your application.

Your application must include the following:

- a statement that clearly demonstrates the extent to which you satisfy each of the selection criteria, including evidence of the impact of your work beyond academia, such as through contributions made to the economy, society, culture, public policy or services, health, the environment or quality of life
- a curriculum vitae that provides your personal details, qualifications and work history
- a list of publications
- the names, email addresses, mailing addresses and telephone contact details of three referees who can be contacted for a confidential report

Please note that your permission will be sought before referees are contacted.

The University of Western Australia provides visa sponsorship for international appointees.

Lodging your application

Applications must be submitted online at: jobs.uwa.edu.au/executive

The closing date for applications is Tuesday, 20 August 2019

If you wish to discuss the position in confidence please contact:

Professor Jane Balme
Acting Head of School
Faculty of Arts, Business, Law and Education
Tel: +61 8 6488 3825
Email: jane.balme@uwa.edu.au



THE UNIVERSITY OF
**WESTERN
AUSTRALIA**

The University of Western Australia
35 Stirling Highway
Crawley WA 6009