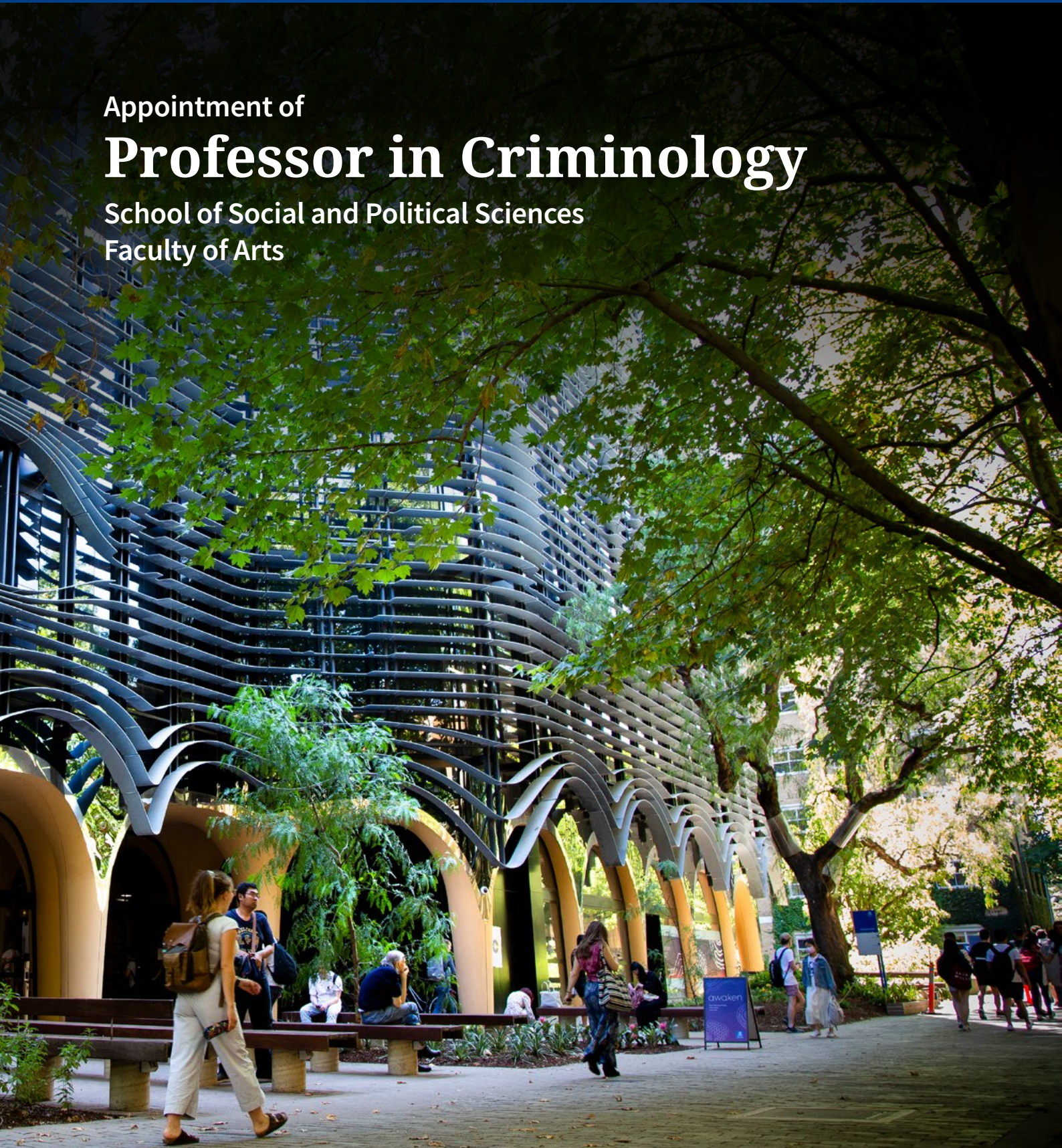


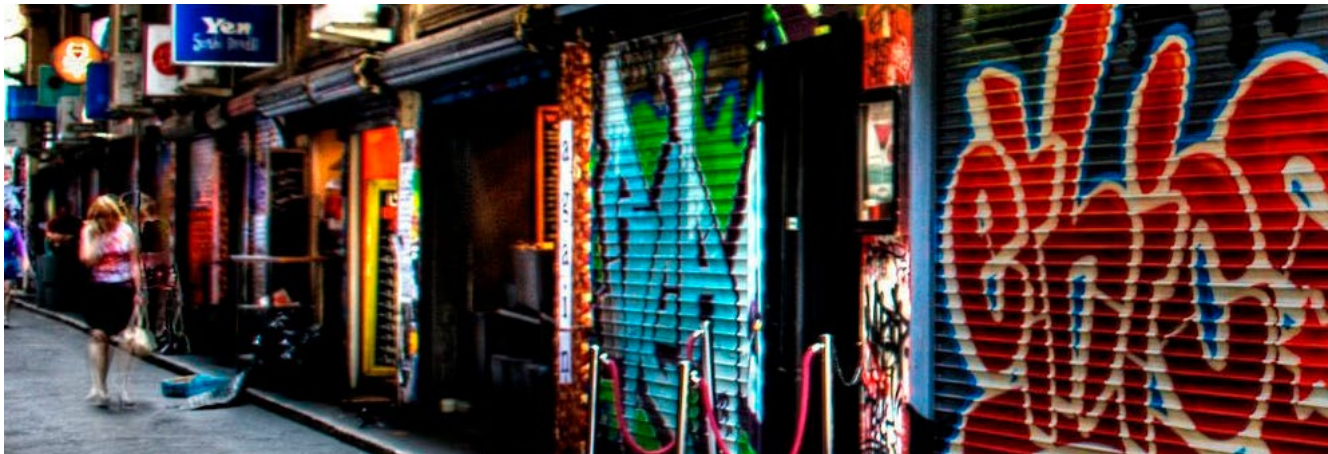


THE UNIVERSITY OF
MELBOURNE

Appointment of **Professor in Criminology**

School of Social and Political Sciences
Faculty of Arts





Our Faculty

The Faculty of Arts at the University of Melbourne is widely recognised as Australia's leading centre for the study of the Humanities and Social Sciences

The Faculty of Arts at the University of Melbourne brings together leading scholars across 40 disciplines of study in the Humanities and Social Sciences. Our academic staff are of international standing and committed to excellence in teaching and research.

The Faculty is home to the University's first degree, the Bachelor of Arts, which is one of the most sought-after degrees in Australia, consistently attracting outstanding students from around the country and internationally. Our teaching programs encourage critical inquiry, creativity, global perspectives and the questioning of ideas. In 2016, the Faculty opened Arts West – an award-winning building in the heart of the historic campus and a new home for the Bachelor of Arts. Arts West supports active and informal learning through object-based learning laboratories and purpose-built teaching spaces which has transformed teaching and learning in the Humanities and Social Sciences, setting a new benchmark in the Asia region.

Our Graduate School of Humanities and Social Sciences offers 19 professionally oriented Masters programs, including Arts and Cultural Management, Applied Linguistics, Global Media Communication, International Relations and Public Policy and Management. The Graduate School also houses our outstanding PhD program.

Over its 150-year history, the Faculty has produced leaders in a wide range of fields, including government, business, creative industries and media, community and not-for-profit organisations. The Faculty maintains strong strategic relationships with leading international universities through joint teaching collaborations, research projects and student exchange programs. Partnerships with government, not-for-profit and private organisations facilitate work integrated learning opportunities for our students and research collaboration with our researchers. The Faculty has an active and vibrant outreach program, promoting lifelong learning in the Humanities and Social Sciences.

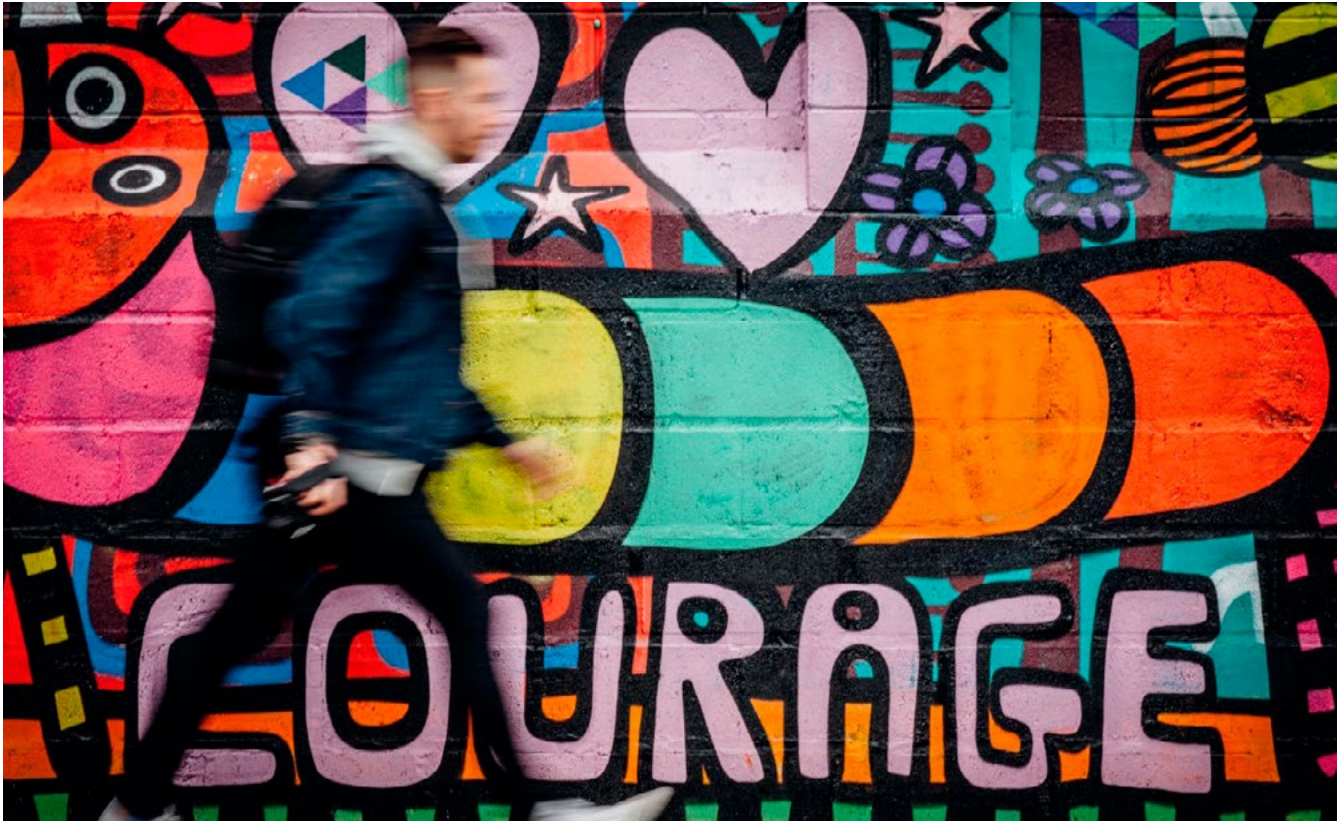
Our community includes over 450 academic and professional staff, 10,000 students across undergraduate, graduate coursework and research higher degree programs, and a strong and active alumni population of over 70,000 worldwide.

The Faculty actively seeks to welcome and value the unique contributions of people from all backgrounds and is committed to diversity and inclusion practices to achieve our vision. Our Faculty has gender parity across all levels and supports its staff through initiatives such as the Faculty of Arts Conference Childcare Support Scheme, the Faculty's mentoring program and the Divisional Indigenous Development Plan (DIDP).

Alongside the Graduate School of Humanities and Social Sciences, the Faculty consists of five interdisciplinary Schools:

- **Asia Institute** – the University's key centre for study in Asian languages and cultures, with programs including Arabic, Chinese, Indonesian and Japanese languages, alongside Asian, Islamic and Contemporary Chinese Studies.
- **School of Culture and Communication** – with programs in Art History, Arts and Cultural Management, Indigenous Studies, Creative Writing, English and Theatre Studies, Media and Communications, Publishing and Editing, Journalism, and Screen and Cultural Studies.
- **School of Historical and Philosophical Studies** – encompassing History, History and Philosophy of Science, Philosophy, Jewish and Hebrew Studies, Conservation and Classics and Archaeology.
- **School of Languages and Linguistics** – includes French, German, Italian, Russian and Spanish languages, alongside European studies, Latin American studies and Linguistics, Applied Linguistics and English as a Second Language.
- **School of Social and Political Sciences** – with programs in Anthropology and Development Studies, Criminology (including Law and Justice), Political Science (including International Relations and Public Policy), and Sociology (including Social Policy), and Gender Studies.

For more information about the faculty, please visit arts.unimelb.edu.au



Our Faculty Strategy

Under the leadership of Professor Russell Goulbourne, we have launched a **Faculty of Arts Strategy** focusing on:

- Transformative learning
- Research that makes a difference
- Partnerships that add value
- Support for all staff

Mission

The Faculty of Arts is committed to benefiting the peoples, cultures and economies of Melbourne, Australia, the region and the world.

We do this across our distinctively broad range of Humanities and Social Sciences disciplines by creating, transforming and sharing knowledge that deepens and enriches understanding of what it means to be human and by developing graduates whose skills, values and empathy enable them to shape better, fairer and more sustainable societies.

Values and Behaviours

We are committed to benefiting the peoples, cultures and economies of Melbourne, Australia, the Region and the World. We expect all our staff to commit to our values of:

- Rigour and integrity, generosity and humility, intellectual freedom and critical independence

- Diversity and inclusion, trust and mutual respect, social justice and civic responsibility
- Courage and creativity, openness and transparency, environmental sustainability.

Equal Opportunity, Diversity & Inclusion

The University is an equal opportunity employer and is committed to providing a workplace free from all forms of unlawful discrimination, harassment, bullying, vilification and victimisation. The University makes decisions on employment, promotion and reward on the basis of merit. This commitment is set out in the University's Strategy and policies that address diversity and inclusion, equal employment opportunity, discrimination, sexual harassment, bullying and appropriate workplace behaviour. All staff are required to comply with all University policies.

The University values diversity because we recognise that the differences in our people's age, race, ethnicity, culture, gender, nationality, sexual orientation, physical ability and background bring richness to our work environment. Consequently, the Diversity and Inclusion Strategy 2030 sets out the strategic aims to advance and embed the principles of diversity and inclusion across all activities at the University to create enduring and widespread cultural change.



Our School

The School of Social and Political Sciences is at the forefront of teaching and research in the social sciences in Australia.

Our School consists of a team of more than 150 dedicated academic and professional staff in the disciplines of Anthropology and Development Studies, Political Science, Criminology and Sociology. We are an active and engaged School, with staff and students involved in and leading major research and engagement concentrations such as the Anti-Racism Hallmark Research Initiative, the Future of Work Lab, the African Studies Group, the Myanmar Research Network, the Narrative Network, the Disability, Diversity and Inclusion Initiative, the Australian Centre, the Pacific Network, and the Gender Studies program. Senior leadership of the School comprises the Head of School, School Manager, Deputy Head (Research), Deputy Head (Teaching and Learning), Deputy Head (Partnerships), Deputy Head (Equity and Diversity), Director-International, Director-RHD and Directors of the Early Career Academic Network. The School values its local, regional and international partnerships with external organisations and communities, with significant partnerships with the Brotherhood of St Laurence, Scope Australia, and the Universitas Gadjah Mada.

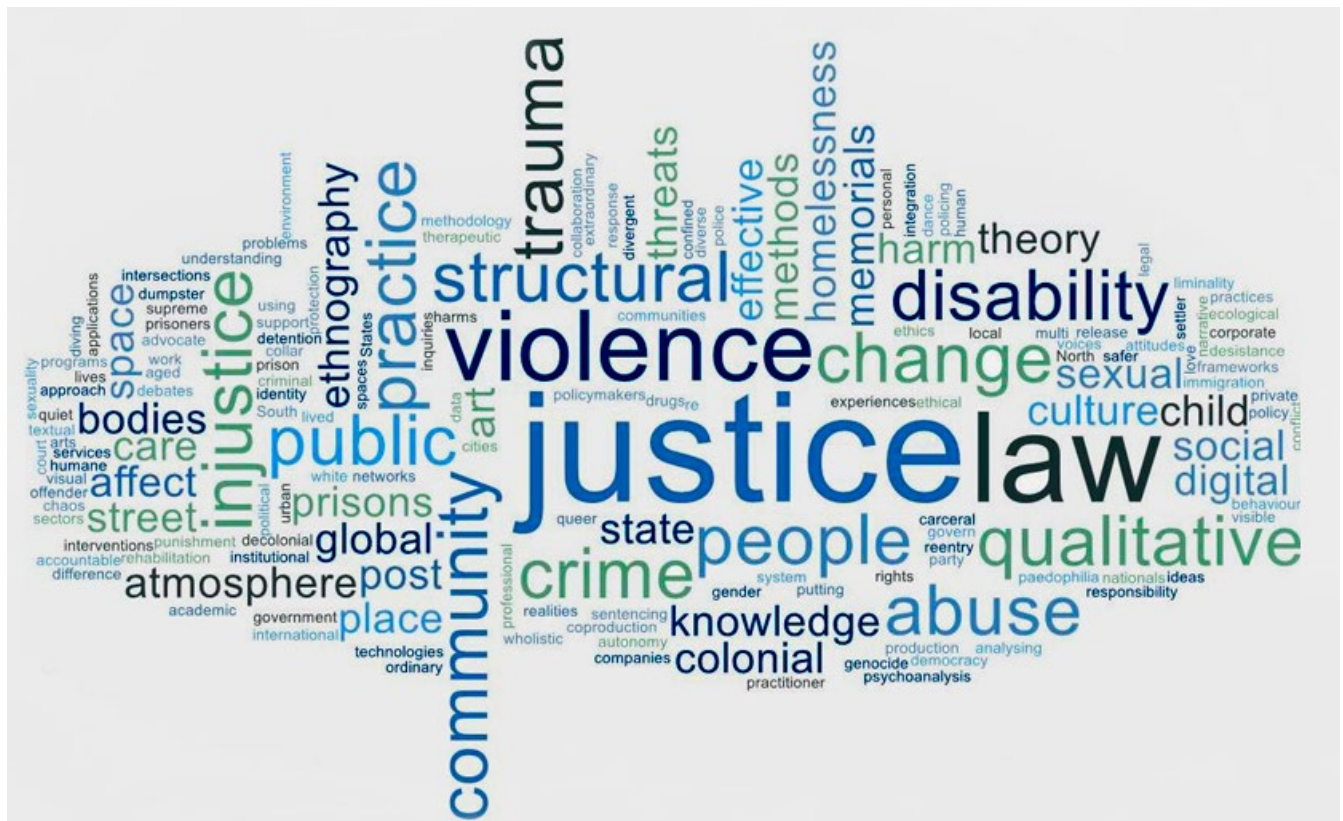
The School is aligned with the Faculty of Arts' commitment to being transformed by Indigenous knowledges and perspectives across its teaching, research, and local and international partnerships activity. To enable this transformation, the Faculty of Arts has reformed its

governance to include the role of Associate Dean Indigenous who leads the implementation of the Faculty's Divisional Indigenous Development Plan. This plan commits the Faculty to furthering the impact of its Indigenous Studies program and research activities including that of the Research Unit on Indigenous Languages and the renewed Australian Centre that takes up the agenda of the former Indigenous-Settler Relations Collaboration.

The School is committed to providing an environment that will sustain and enable First Nations and persons of colour to flourish in their chosen fields. The Head of School is committed to maintaining an environment for all staff in the School in which staff are valued for the work they do, and are supported to do excellent work. This includes clear communication channels and the maintenance of structures of governance and collegiality, and a culture of substantive equity for all staff.

The School acknowledges that we work and learn on the lands of the Wurundjeri Woi Wurrung People of the Kulin Nation, whose land was never ceded, and whose sovereignty remains. We pay respect to Elders, past and present, and to the important place of Indigenous knowledge in the academy.

For more information about the school, please visit arts.unimelb.edu.au/school-of-social-and-political-sciences



Criminology at Melbourne

We are an eclectic team of interdisciplinary scholars doing critical criminological work. We draw on a wide range of theoretical and methodological resources – including decolonial, poststructural, and sociological theories and community-engaged, ethnographic, and creative methods – to examine the contexts and impacts, affects and effects of harm, violence, and criminalisation from many different perspectives, including lived experience perspectives.

We are seeking an enthusiastic and collaborative colleague to engage with the challenges and tensions we encounter in contemporary critical criminology. We are looking for someone to lead with genuine collegiality at an exciting time in our program's development and growth, and who can demonstrate how they will articulate with and build on our existing strengths in Criminology at Melbourne. You can find out more about us here: **Criminology @ Melbourne.**

If you are the successful candidate, you will be responsible for teaching at both the undergraduate and graduate levels (including the development of new subjects, as appropriate). You will take a leading collaborative role in curriculum renewal and development at the program level.

You will bring your local and/or international industry knowledge and networks into the undergraduate and graduate programs to enhance students' opportunities for industry and community engagement. And, as an experienced research supervisor, you will supervise theses in the PhD, coursework Masters and Honours programs.

As the successful applicant, you will be an internationally recognised expert in Criminology or Socio-Legal Studies with a strong track record of research resulting in high quality publications with leading publishers. You will have a record of, and/or strong potential for, the raising of grant income, be able to show evidence of an established or developing record of excellence and innovation in teaching, as well as exceptional engagement and outreach skills.

As the successful candidate you will foster engagement links with external networks/partners nationally and internationally. You will be expected to have experience in taking on leadership roles and administrative tasks associated with the appointment, and to perform these responsibly and collegially, which means you will be expected to demonstrate strong communication and interpersonal skills.

And, as Professor of Criminology, you will be expected to make a significant contribution to the School's research culture and reputation in research, teaching and engagement through the development of your own individual profile, but also as a generous and collegial leader and member of our Criminology team.

Position Summary and Selection Criteria

Classification	Level E, Professor
Salary	Level E: \$ 217,805 p.a.
Superannuation	17%
Working hours	Full time
Basis of Employment	Continuing

Acknowledgment of Country

The Faculty of Arts acknowledge the Elders, and descendants of the Wurundjeri people who have been and are the Custodians of these lands. We acknowledge that the land on which we meet was the place of age-old ceremonies, of celebration, initiation and renewal, and that the local Aboriginal peoples have had and continue to have a unique role in the life of these lands.

Position Summary

The Professor in Criminology will be an outstanding researcher and a committed and engaging teacher who will provide academic leadership across the undergraduate and graduate programs, the Criminology discipline, and more broadly across the School of Social and Political Sciences.

The Professor in Criminology will bring internationally recognised expertise, outstanding research and scholarship, demonstrated outstanding leadership capabilities, exceptional engagement and outreach skills and enhance the teaching profile in the Master of Criminology and the Undergraduate Program. Your expert knowledge, networks and experience with grant success and publications would also enhance the profile of the Criminology discipline. Your research field should complement and enhance the existing research strengths of Criminology Melbourne.

The Professor in Criminology will have attained recognition as an eminent authority in their discipline and achieved distinction at national and international levels.

We welcome applications from Aboriginal and Torres Strait Islander people, people from diverse cultural backgrounds, people of colour, and people with disabilities. We welcome applications from people with lived experience.

Key Responsibilities

A Level E Academic will have attained recognition as an eminent authority in their discipline and achieved distinction at national and international levels.

All professors of the University are members of the Academic Board of the University.

A Level E academic will make an outstanding contribution to the research, scholarship, teaching and administration activities within the School, Faculty and University. A Level E academic will make an outstanding contribution to governance and collegial life, inside and outside, of the institution and will have attained recognition at a national or international level in their discipline. They will make original and innovative contributions to the advancement of scholarship, research and teaching in their discipline.

Teaching and Learning

- Undertake curricula development and teaching into undergraduate and/or postgraduate programs
- Coordinate and teach undergraduate and postgraduate subjects and/or degree programs offered by the discipline
- Play a major role in the review and development of curriculum within the discipline/program and model effective and collaborative pedagogical practices
- Contribute actively to graduate coursework activities locally, nationally and internationally as well as supervise research higher degree students
- Apply for teaching and learning innovation grants (with emphasis on national competitive and peer reviewed)
- Supervise teaching support staff
- Actively engage with the Faculty's Arts Teaching Innovation and eTeaching teams to enable effective curriculum development in subjects and programs
- Undertake student consultation and student advising, as per Faculty and University expectations.
- Mark assessment and finalising results in line with School, Faculty and University policies, processes and deadlines
- Complete administrative tasks associated with the subjects taught including the development of subject LMS sites, readings online, subject guides, gradebook and setting assessment tasks
- Assist Student Services and the ASO team with Special Consideration and Academic Integrity queries and outcomes
- Supervision of honours, graduate coursework and graduate research students
- Contribute to and play a leadership role in raising the teaching profile of the discipline



Research

- Provide leadership and research-related mentoring to staff in the Criminology discipline
- Build collaborative relationships with other University schools, departments and centres
- Encourage and foster collaborative research relationships between program staff and external partner academics and institutions
- Promote collaboration across institutions, nationally, and internationally as required to further relevant research and raise the discipline's research profile both nationally and internationally
- Lead and actively participate in research activities of the discipline, in research seminars as well as at national and international conferences
- Manage balanced budgets for awarded research grants, contracts and projects
- Apply for research grants that reflect the strategic priorities of the School, Faculty and the University, as per the Faculty guidelines
- Publications, including (but not limited to) leading internationally peer-reviewed journal articles, high quality books, and book chapters, books, creative outputs and commissioned reports
- Be responsible for implementing effective measures for attracting high quality research Higher Degree Research students with demonstrated outcomes of increased enrolment, supervision and completion.

Leadership and Service

Professors at the University have a unique opportunity to profess their discipline in the public arena and to ensure the community is well informed on key issues affecting it. The Professor of Criminology is expected to have strong community linkages, have interactions with industry and stakeholders, have communications through the press, and demonstrate leadership across the discipline and school.

- Be a leader within the Criminology discipline, the School and the University and contribute to the strategic direction of the discipline
- Mentor and supervise the performance of colleagues
- Actively contribute to a workplace culture of accountability, communication and transparency
- Engage with and cultivate close links with key stakeholders
- Be involved in professional activity, including participation in meetings of professional societies

- Develop strong links with government and non-government organisations locally and abroad

Selection Criteria

Essential

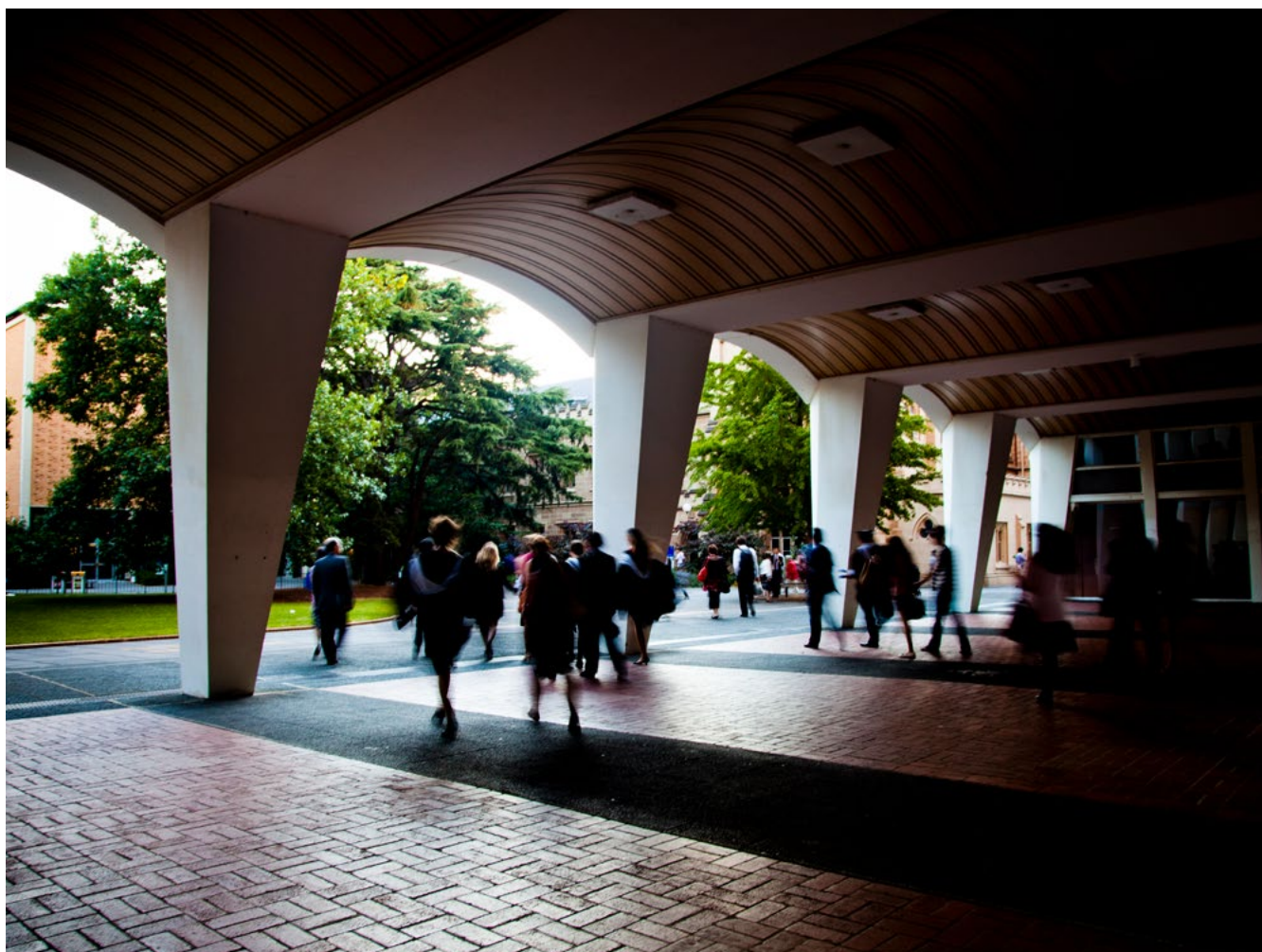
- A completed PhD in Criminology or related discipline
- An internationally recognised publication record of distinction and innovation and recognised excellence in their research field that complements the existing research strengths of Criminology at Melbourne
- Demonstrated track record of success in gaining nationally and/or internationally competitive research grants
- Demonstrated capacity to articulate and engage with challenges and tensions in contemporary critical criminology.
- An innovative current and future research agenda that pushes existing disciplinary boundaries in new directions.
- Extensive knowledge of the sector and demonstrated ability to collaborate with industry partners and / or communities to foster and deliver engagement and partnership activities, and build local and/or international networks and partnerships.
- Demonstrated capacity to foster new engagement activities, including creative engagement with the public and / or Industry
- Demonstrated ability to work independently as well as work collegially and collaboratively including the mentoring of junior staff.
- Demonstrated capacity to mentor staff in the discipline and University
- Demonstrated excellence in teaching
- Demonstrated excellence in leadership, including the capacity for strategic planning that will advance the discipline
- Demonstrated capacity to contribute to the collegial environment and intellectual culture of the School of Social and Political Sciences, including the ability to interact positively with academic and professional staff.

Desirable

- Strong record of public engagement in areas of criminological importance

Special Requirements

- Employment in this position is conditional upon completion of the University's "fit and proper" checks where required and receipt of a valid Working with Children Check prior to commencement.



Our Strategic Plan

Advancing Melbourne 2020 – 2030

The University's strategic direction is grounded in its purpose. While its expression may change, **our purpose is enduring: to benefit society through the transformative impact of education and research.** Together, the vision and purpose inform the focus and scale of our aspirations for the coming decade.

Advancing Melbourne reflects the University's commitment to its people, its place, and its partners. **Our aspiration for 2030 is to be known as a world-leading and globally connected Australian university, with our students at the heart of everything we do.**

We will offer students a distinctive and outstanding education and experience, preparing them for success as leaders, change agents and global citizens.

We will be recognised locally and globally for our leadership on matters of national and global importance, through outstanding research and scholarship and a commitment to collaboration.

We will be empowered by our sense of place and connections with communities. We will take opportunities to advance both the University and the City of Melbourne in close collaboration and synergy.

We will deliver this through building a brilliant, diverse and vibrant University community, with strong connections to those we serve.

The means for achieving these goals include the development of the University of Melbourne's academic and professional staff and the capabilities needed to support a modern, world-class university. Those means require a commitment to ongoing financial sustainability and an ambitious infrastructure program which will reshape the campus and our contribution to the communities we engage with. This strategy, and the priorities proposed, is centred around five intersecting themes; place, community, education, discovery and global.

More information about Advancing Melbourne can be found at about.unimelb.edu.au/strategy/advancing-melbourne.



Our city

Geography

Melbourne is the capital city of Victoria - and is the second largest city in Australia with a population of more than 5 million people and a metropolitan area of 9990.5 km². The Economist Intelligence Unit has rated Melbourne one of the world's most liveable cities for six consecutive years, based on its education, entertainment, health care, research and development, tourism and sport.

The City of Melbourne municipality, in which the University's main Parkville campus is based, covers 37.7 km² and has a population of more than 143 000 people. It includes the city centre and a number of attractive inner suburbs with thriving communities and businesses.

The City of Melbourne is home to residents from 180 countries who speak more than 233 languages and dialects and follow 116 religious faiths. The Wurundjeri, Boonwurrung, Taungurong, Dja Dja Wurrung and the Wathaurung people of the Kulin Nation are the Traditional Owners of the land now known by its European name of Melbourne.

The City of Melbourne is recognised as Australia's cultural capital with a number of world-class galleries and museums, internationally renowned food and wine regions, and an impressive year-round calendar of events catering for all tastes.

Parkville Campus

The Parkville campus provides easy access to cafes, shops and services; libraries with extensive collections; as well as cultural and sporting facilities. Nearby Lygon Street is home to a huge variety of cafes and shops while the northern end of the University is adjacent to the popular Princes Park, hosting a range of outdoor activities.

Parkville is recognised as the hub of Australia's premier knowledge precinct, comprising eight hospitals as well as numerous leading research institutes and knowledge-based industries. Although a sizeable portion of the Faculty of Medicine, Dentistry and Health Sciences is located in Parkville, the Faculty also has academic departments co-located at a range of health services throughout the Melbourne metropolitan area and rural and regional Victoria. These include St Vincent's Hospital, The Royal Victorian Eye and Ear Hospital, Austin Hospital, Western Health, Northern Health as well as the Department of Rural Health based at Shepparton in the Goulburn Valley with health services affiliations to almost 40 smaller towns in rural Victoria.



Need further information?

General information about the University of Melbourne is available through its website at www.unimelb.edu.au

About the University of Melbourne

about.unimelb.edu.au

Annual Reports

about.unimelb.edu.au/strategy/annual-reports

Faculty of Arts

arts.unimelb.edu.au

School of Social and Political Sciences

arts.unimelb.edu.au/school-of-social-and-political-sciences

Research

University of Melbourne research strategy and implementation

research.unimelb.edu.au

Teaching

Teaching and Learning at the University of Melbourne

provost.unimelb.edu.au

Careers

about.unimelb.edu.au/careers

For queries, please email

snr-talentacq@unimelb.edu.au

Please do not send your application to this email address.

To Apply

You can apply from the job site you visited.

The Faculty of Arts is committed to equity, diversity and inclusion and strongly encourages people with diverse experiences to apply. This includes First Nations people, culturally and linguistically diverse people, Deaf and hard of hearing people, people with a disability, LGBTIQ+, and neurodiverse people. If you have any accessibility requirements for the application or interview, please contact us. We are dedicated to ensuring barrier free and inclusive practices to recruit the most talented candidates. A position description is available in alternate formats if required, including USB, Large Print and Plain English.

RFQ08380