



Job Description Form



SOUTH WEST

Landscape Photos: Tourism Western Australia

Position Title

Position number: 617811

Senior Medical Practitioner

Regional Profile

The South West is located in the southern-western corner of Australia and covers an area of nearly 24,000 square kilometres. It is Western Australia’s most popular tourist destination and has unique biodiversity and a rich natural environment. The Regional Health Service offers two (2) main health facilities at Bunbury and Busselton. The Health Service is also widely supported with a network of smaller hospitals and Multi-Purpose Service (MPS) sites at: Augusta, Boyup Brook, Bridgetown, Collie, Donnybrook, Harvey, Margaret River, Nannup, Northcliffe, Pemberton and Warren.

About the WA Country Health Service

Our Strategic Priorities



Our Values

Community

We live and work in country communities. We are invested in the health, wellness and viability of country communities and the vibrancy, diversity and future of country WA.

Compassion

We are inclusive, respectful, and considerate. We care deeply about the people in our care and country communities.

Quality

We provide safe, high-quality care, constantly striving to innovate, improve and achieve trust in our care.

Integrity

We bring honesty, collaboration and professionalism to everything that we do.

Equity

We are passionate about fairness in healthcare for all Western Australians, especially the most vulnerable and disadvantaged people and communities.

Curiosity

We continually enquire and seek to understand, using the best evidence, insight and research to improve care.

Our Vision

To be a global leader in rural and remote healthcare.

Our Mission

To deliver and advance high quality care for country WA communities.

Directorate overview

The Directorate of Medical Services provides leadership and oversight for Western Australian Country Health Service (WACHS)- South West in the areas of patient safety and clinical quality, clinical leadership, and medical workforce.

The Directorate works collaboratively with the WACHS Central Office Directorate and local staff to deliver patient centered, high quality, value-based health services to WA's regional and remote population. The Directorate aligns with the WACHS strategy and values of community, compassion, quality, integrity, equity and curiosity.

The Directorate leads and coordinates a range of programs for WACHS including medical workforce recruitment and credentialing and safety and quality.

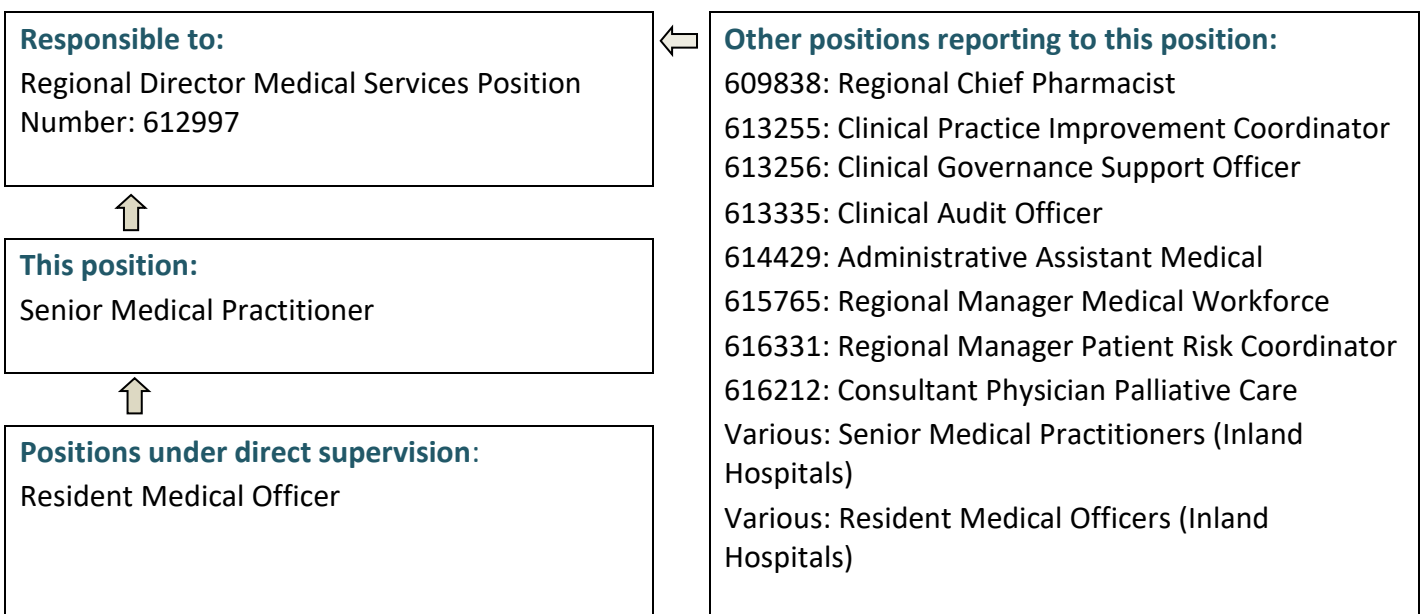
Position Details

Position Number:	617811	Registration Date:	July 2025
Classification:	MP Year 1-3	Location:	South West
Award / Agreement:	Medical Practitioners Agreement		
Organisational Context:	Medical		

Position Overview

Works as part of a multi-disciplinary team throughout the health services across Inland (Collie, Harvey, Donnybrook, Bridgetown and Warren). Provides high quality, patient-centred, evidence-based clinical care in line with WACHS values. Works as part of a regional team and with statewide transport, telehealth and mental health services to optimise patient care in the most appropriate location. Provides leadership, training, supervision and education for Doctors in Training in consultation with other specialists and senior staff.

Reporting Relationships



Key Duties/Responsibilities

Provides whole-patient and patient centred care in accordance with WACHS values of Community, Compassion, Quality, Integrity, Equity and Curiosity.

1. Clinical Duties

- 1.1. Responsible for providing high quality clinical care to patients in the District Health service, hospital and/or multipurpose service.
- 1.2. Manages acute patients in the Emergency Department to the level of the clinical service capability of the facility and liaises with referral, telehealth and transport services to transfer patients as appropriate within a clinical risk management framework.
- 1.3. Manages patients in general wards as part of a multidisciplinary clinical team with allied health, nursing, aged care, specialist geriatric, rehabilitation, community service and palliative care input.
- 1.4. Accepts patients from regional or tertiary health services ensuring safe transfer and continuity of care.
- 1.5. Provides additional skill(s) as a Rural Generalist (to the level of service capability of the facility) and within the defined Scope of Clinical practice approved by the WACHS Credentialing and Scope of Practice Committee.

2. Day to day Clinical duties include:

- 2.1. Attending to patients in order of medical urgency
- 2.2. Taking history and full medical examinations of new admissions, arranging appropriate investigations and performing medical procedures as required.
- 2.3. Managing medical conditions using contemporary evidence based clinical practice
- 2.4. Collaborating as a member of a multidisciplinary clinical team to facilitate patient management.
- 2.5. Liaising with referral hospitals, statewide transport, Acute Patient Transport Coordination (APTC), Emergency telehealth, Mental Health and retrieval services – optimising care prior to transport and ensuring written communication is available at all times when patients are transported to and from the facility.
- 2.6. Communicating with family, other medical practitioners, community services, residential aged care, mental health, geriatric and disability services concerning patient management.
- 2.7. Supervision and support to junior medical staff and other clinical staff working in the health service.
- 2.8. Communicating for safety at all times with a structured clinical handover, ISOBAR, written documentation of each episode of patient management into Bossnet and NACS at time of discharge from the ward.
- 2.9. Completing medical cause of death certification and referrals to WA Coroner as necessary.
- 2.10. Participating in after hours, weekend and public holiday roster.

3. Administrative Duties

- 3.1. Notification of clinical incidents and clinical safety risks into DATIX CIMS.
- 3.2. Investigates clinical incidents and complaints at the direction of Regional Medical Director.
- 3.3. Prepares medical reports in liaison with senior medical staff.
- 3.4. Participates in quality improvements activities, National standards committees and research where appropriate.
- 3.5. Undertakes ongoing professional development and mandatory training to maintain professional and technical skills.
- 3.6. Active involvement in educational activities.
- 3.7. Performs other duties as directed by the Regional Director Medical Services.



Work Related Requirements

The following criteria are to be read together with the Brief Summary of Duties and considered in the context of the WACHS Values.

Essential

1. Eligible for registration by the Medical Board of Australia.
2. Substantial experience as a Medical Practitioner in general medicine and/or emergency medicine.
3. Relevant skills and experience to work in rural and remote WA as an independent senior practitioner.
4. Demonstrated highly developed communication and interpersonal skills.
5. Ability to work in a multi-disciplinary team environment.
6. Eligible for / or in possession of a current C or C-A Class drivers licence.

Desirable

1. Fellowship with the Royal Australian College of General Practice (RACGP) and/or the Australian College of Rural and Remote Medicine (ACRRM), or working towards the same.
2. Demonstrated commitment to ongoing education and research.
3. Current knowledge of legislative obligations for Equal Opportunity, Disability Services and Occupational Safety and Health and how these impact on employment and service delivery.

Appointment Pre-requisites

Appointment is subject to:

- Evidence of registration by the Medical Board of Australia must be provided prior to commencement.
- Provision of the minimum identity proofing requirements.
- Successful Criminal Record Screening Clearance.
- Successful Pre-Employment Health Assessment.
- Successful WA Health Integrity Check.
- Successful Working With Children Check.
- Successful Aged Care Criminal Record Clearance.
- Evidence of a current C or C-A Class driver's license.
- Completion of training for Mandatory Reporting of Child Sexual Abuse.

**WA Country Health Service
South West**

09 July 2025

REGISTERED

