



Job Description Form



SOUTH WEST

Landscape Photos: Tourism Western Australia

Position Title

Position number: Various

Senior Medical Practitioner

Regional Profile

The South West is one of Western Australia's most populous and economically diverse regions, home of the Noongar people who are the traditional owners. The region spans 24 000 kms of rich coastline and inland forestry, farming and national parks.

The port city of Bunbury has just over 80 000 residents. Located 180km south of Perth, it is well connected and is the gateway to the South West. With a city of this size, there is an abundance of sporting, cultural and educational opportunities.

About the WA Country Health Service

Our Strategic Priorities



Our Values

Community

We live and work in country communities. We are invested in the health, wellness and viability of country communities and the vibrancy, diversity and future of country WA.

Compassion

We are inclusive, respectful, and considerate. We care deeply about the people in our care and country communities.

Quality

We provide safe, high-quality care, constantly striving to innovate, improve and achieve trust in our care.

Integrity

We bring honesty, collaboration and professionalism to everything that we do.

Equity

We are passionate about fairness in healthcare for all Western Australians, especially the most vulnerable and disadvantaged people and communities.

Curiosity

We continually enquire and seek to understand, using the best evidence, insight and research to improve care.

Our Vision

To be a global leader in rural and remote healthcare.

Our Mission

To deliver and advance high quality care for country WA communities.

Directorate overview

Five out of the 8 hospitals in the Inland region of the South West have opportunities for Senior Medical Practitioners to work in the emergency department. These include Collie District Hospital, Harvey Hospital, Donnybrook Hospital, Bridgetown Hospital and Warren District Hospital (Manjimup).

Collie is one of the larger sites, alongside Warren District Hospital, in providing inpatient care, maternity, theatre, palliative care, allied health and emergency medicine. All sites are supported by the Emergency Telehealth Service (ETS) as required.

It is an exciting time to work as a District Senior Medical Practitioner (SMP) with leadership and professional development opportunities for Rural Generalists. With this growth comes an opportunity to develop positions for prevocational doctors in the inland sites. The Rural Clinical School of WA has medical students placed in Collie and Bridgetown, and intern positions are well embedded at Bunbury Hospital.

WACHS actively supports and encourages diversity and inclusion across all occupational groups through the development and implementation of initiatives aimed at accessing and improving employment and mentoring opportunities for all people. Our core values are Community, Compassion, Quality, Integrity, Equity and Curiosity.

Position Details

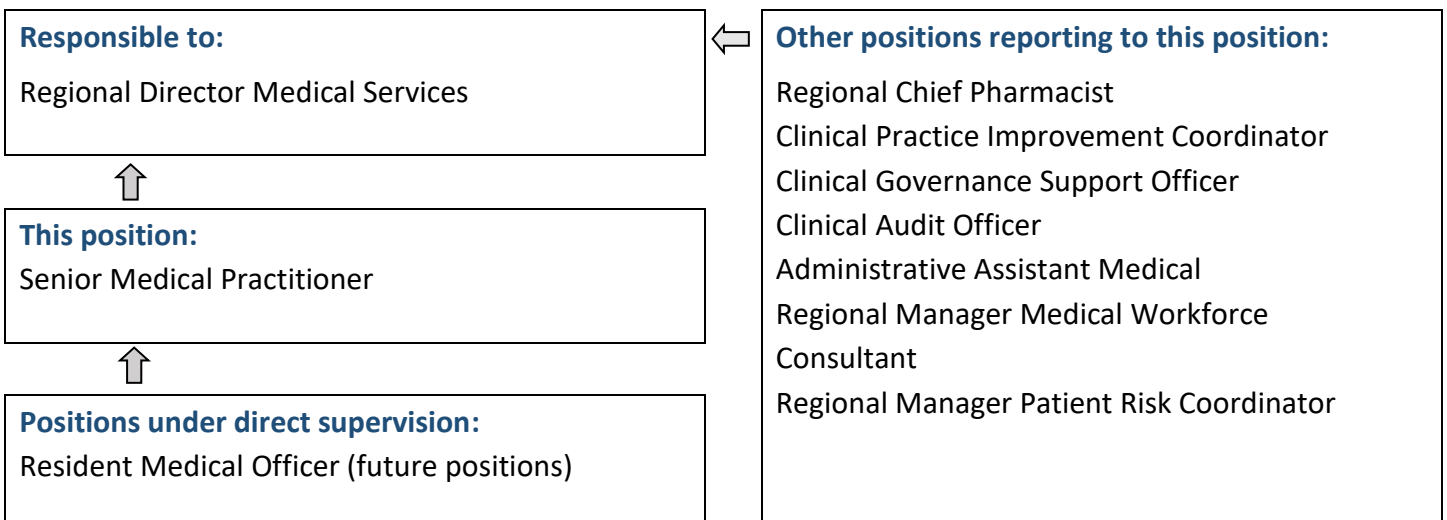
Position Number:	Various	Registration Date:	23/08/2024
Classification:	MP Year 1-3	Location:	South West
Award / Agreement:	Medical Practitioners Agreement		
Organisational Context:	Medical		

Position Overview

Senior Medical Practitioners work independently, within a multidisciplinary team setting, to provide emergency and inpatient care in the Inland Hospitals.

- If desired, up to ¼ of all shifts may be undertaken in the Bunbury Hospital Emergency Department
- Provision of high quality, evidence based, patient centred care- in keeping with WACHS core values.
- Works as part of a regional team including statewide transport, telehealth services, and mental health services to optimise and facilitate care in the most appropriate location.
- Provides leadership within a multidisciplinary team setting
- Where available, provides supervision and support for doctors-in training, along with other specialists and senior staff.

Reporting Relationships



Key Duties/Responsibilities

Provides whole-patient and patient centred care in accordance with WACHS values of Community, Compassion, Quality, Integrity, Equity and Curiosity.

1. Clinical Duties

- 1.1. Responsible for providing high quality clinical care to patients in the Inland District Health service sites.
- 1.2. Manages acute patients in the Emergency Department to the level of the clinical service capability of the facility, and liaises with referral, telehealth and transport services to transfer patients as appropriate within a clinical risk management framework.
- 1.3. Manages patients in general wards as part of a multidisciplinary clinical team with allied health, nursing, aged care, specialist geriatric, rehabilitation, community service and palliative care input.
- 1.4. Accepts patients from regional or tertiary health services ensuring safe transfer and continuity of care.
- 1.5. Provides additional skill(s) as a Rural Generalist (to the level of service capability of the facility) and within the defined Scope of Clinical practice approved by the WACHS Credentialing and Scope of Practice Committee.

2. Day to day Clinical duties include:

- 2.1. Attending to patients in order of medical urgency.
- 2.2. Taking history and full medical examinations of new admissions, arranging appropriate investigations and performing medical procedures as required.
- 2.3. Managing medical conditions using contemporary evidence based clinical practice.
- 2.4. Collaborating as a member of a multidisciplinary clinical team to facilitate patient management.
- 2.5. Liaising with referral hospitals, statewide transport, Acute Patient Transport Coordination (APTC), Emergency telehealth, Mental Health and retrieval services – optimising care prior to transport and ensuring written communication is available at all times when patients are transported to and from the facility.
- 2.6. Communicating with family, other medical practitioners, community services, residential aged care, mental health, geriatric and disability services concerning patient management.
- 2.7. Supervision and support to junior medical staff and other clinical staff working in the health service.
- 2.8. Communicating for safety at all times with a structured clinical handover, ISOBAR, written documentation of each episode of patient management into Bossnet and NACS at time of discharge from the ward.
- 2.9. Completing medical cause of death certification and referrals to WA Coroner as necessary.
- 2.10. Participating in after hours, weekend and public holiday roster.

3. Administrative Duties

- 3.1. Notification of clinical incidents and clinical safety risks into DATIX CIMS.
- 3.2. Investigates clinical incidents and complaints at the direction of Regional Medical Director.
- 3.3. Prepares medical reports in liaison with senior medical staff.
- 3.4. Participates in quality improvements activities, National standards committees and research where appropriate.
- 3.5. Undertakes ongoing professional development and mandatory training to maintain professional and technical skills.
- 3.6. Active involvement in educational activities.
- 3.7. Performs other duties as directed by the Regional Director of Medical Services.



Work Related Requirements

The following criteria are to be read and considered together with the key duties/responsibilities:

Essential

1. Eligible for registration by the Medical Board of Australia.
2. Specialist registration and holds either Fellowship of the Royal Australasian College of General Practitioners (RACGP) and/or the Australian College of Rural and Remote Medicine (ACRRM).
3. Substantial experience working in emergency medicine.
4. Relevant skills and experience to work in rural and remote WA as an independent senior practitioner.
5. Demonstrated highly developed communication and interpersonal skills.
6. Ability to work in a multi-disciplinary team environment.
7. Eligible for / or in possession of a current C or C-A Class drivers licence.

Desirable

1. Demonstrated commitment to ongoing education and research.
2. Current knowledge of legislative obligations for Equal Opportunity, Disability Services and Occupational Safety and Health and how these impact on employment and service delivery.

Appointment Pre-requisites

Appointment is subject to the following:

- Evidence of registration by the Medical Board of Australia must be provided prior to commencement.
- Provision of the minimum identity proofing requirements.
- Successful Criminal Record Screening Clearance.
- Successful Pre-Employment Health Assessment.
- Successful WA Health Integrity Check.
- Successful Working With Children Check
- Successful Aged Care Criminal Record Clearance.
- Evidence of a current C or C-A Class driver's licence.
- Completion of training for Mandatory Reporting of Child Sexual Abuse.

WA Country Health Service
South West

29 August 2024

REGISTERED

