



Job Description Form

Community | Compassion | Quality

Integrity | Equity | Curiosity

Position Title

Position number: Various

Consultant Physician – General Medicine

WA Country Health Service

Our mission is to deliver and advance high quality care for country communities.

We are here to improve country people’s health and well-being, to care for the sick and to ensure that country communities can access high quality healthcare.

We aim to deliver services that meet or exceed standards and advance health outcomes for country communities. While we are proud of the services staff deliver, we know that there is scope for us to grow and improve. We want to be at the forefront of the new wave of healthcare, establishing ourselves as a global leader in regional and remote healthcare.

About the WA Country Health Service

Our Strategic Priorities



Our Values

Community

We live and work in country communities. We are invested in the health, wellness and viability of country communities and the vibrancy, diversity and future of country WA.

Compassion

We are inclusive, respectful, and considerate. We care deeply about the people in our care and country communities.

Quality

We provide safe, high-quality care, constantly striving to innovate, improve and achieve trust in our care.

Integrity

We bring honesty, collaboration and professionalism to everything that we do.

Equity

We are passionate about fairness in healthcare for all Western Australians, especially the most vulnerable and disadvantaged people and communities.

Curiosity

We continually enquire and seek to understand, using the best evidence, insight and research to improve care.

Our Vision

To be a global leader in rural and remote healthcare.

Our Mission

To deliver and advance high quality care for country WA communities.

Position Title: Consultant Physician – General Medicine	Position Number: Various	Classification: MP Year 1-9 or Year 1 – 6 (depending on location)
---	--------------------------	---

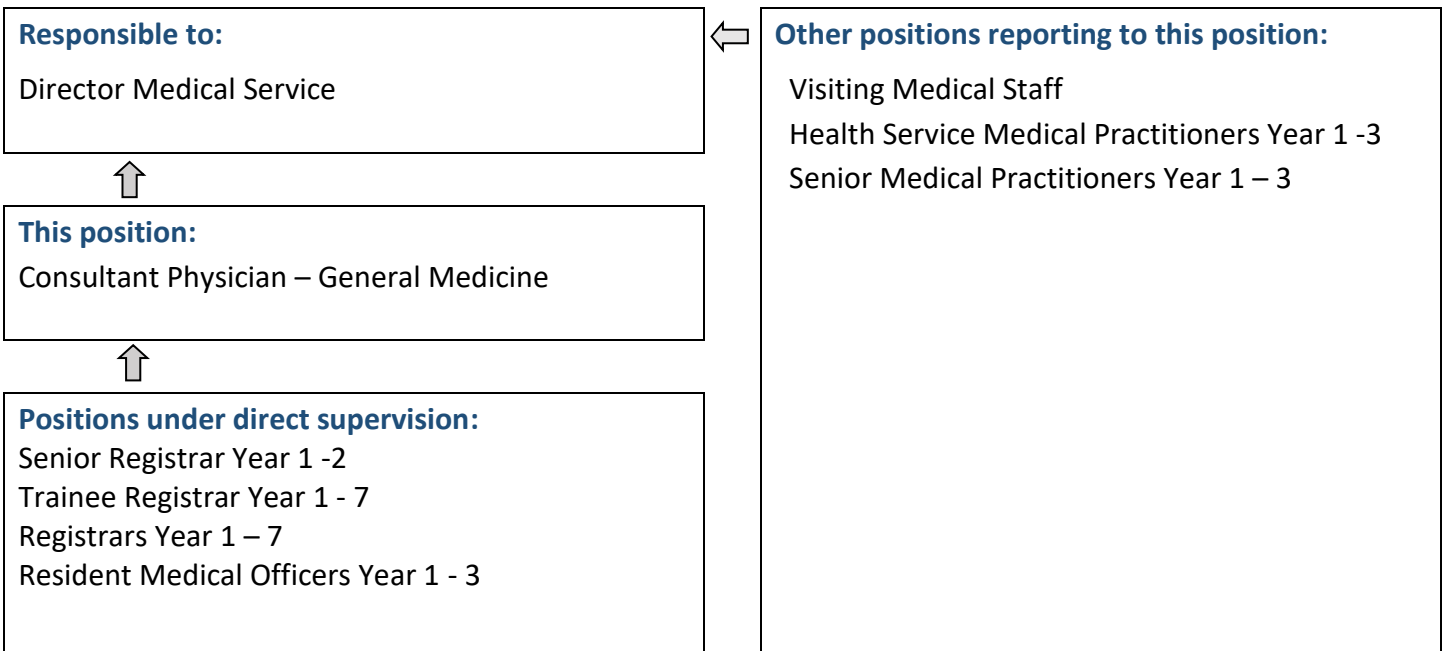
Position Details

Position Number:	Various	Registration Date:	23/07/2023
Classification:	Consultant Year 1 - 9 or Consultant Year 1 – 6 (depending on location)	Location:	Various
Award / Agreement:	WA HEALTH SYSTEM – MEDICAL PRACTITIONERS – AMA INDUSTRIAL AGREEMENT 2022		
Organisational Context:	Medical Services		

Position Overview

- The provision of specialist General Medical services and advice to health professionals and WACHS patients, with both hospital based and outwardly focussed perspectives.
- Take responsibility for policy development and review and provide training, supervision and education for Senior Medical Practitioners and Doctors in Training.
- Provide administrative Leadership in combination with other specialist Physicians and with the clinical nurse specialists in General Medicine.

Reporting Relationships



Key Duties/Responsibilities

1. CLINICAL

- 1.1. Provides a general medicine service. Service provision will be in accordance with departmental needs during normal working hours and as rostered for after hours and weekends. Service provision will encompass inpatient, outpatient and day care as determined and may vary from time to time depending on organisational needs, objectives, organisational KPIs.
- 1.2. Commits to highest professional standards and ethics.
- 1.3. Demonstrates excellence in interpersonal skills when dealing with patients, colleagues, nursing, allied health and support staff.
- 1.4. Commits to a team-based approach to clinical care.
- 1.5. Participates in departmental and other meetings as required to meet organisational and service objectives.
- 1.6. Provides medical reports and other management tasks as appropriate. Ensures the ongoing application of Continuous Quality Improvement principles in systematically evaluating and meeting customer needs.
- 1.7. Responsible for ensuring that discharge summaries are accurately completed and on time.
- 1.8. Works with hospital management in enabling effective patient flow through the hospital.

2. PROGRAM TEACHING

- 2.1. Supervises junior medical staff including assessment of staff performance in relation to clinical competence, adherence to departmental protocols, timely and accurate documentation, communication with patients, relatives, peers, other staff and doctors in other hospitals and the community.

3. QUALITY IMPROVEMENT

- 3.1 Evaluates quality of care and outcomes in General Medicine and implements programs to enhance quality.
- 3.2 Ensures clinical record keeping and discharge summaries are of high standard.
- 3.3 Conducts clinical audits as appropriate.
- 3.4 Ensures own professional skills and knowledge are up to date with contemporary evidence-based practice.
- 3.5 Participates in Departmental audit and M & M meetings.

4. OTHER

- 3.1 Participates in performance management appraisals.
- 3.2 Ensures relevant occupational safety and health practices are implemented and maintained.
- 3.3 Other duties as directed by the Head of Department Medicine and/or Director Medical Services.



Work Related Requirements

The following criteria are to be read together with the Brief Summary of Duties and considered in the context of the WACHS Values.

Essential

1. Eligible for registration by the Medical Board of Australia in the speciality of General Medicine/Internal Medicine, with completion of Fellowship of the Royal Australasian College of Physicians (FRACP) or an RACP substantially comparable outcome. RACP trainees in their penultimate year may be suitable, provided all exam requirements have been passed.
2. Demonstrated skills in Acute General Medicine, High Dependency Care and Coronary Care.
3. Demonstrated experience in longitudinal General Medicine including inpatient wards and outpatient clinics and/or community-based clinics dealing with chronic disease management.
4. Demonstrated commitment to teaching and research.

Desirable

1. Experience as a Consultant in General Medicine.

Appointment Pre-requisites

Appointment is subject to:

- Evidence of specialist registration by the Medical Board of Australia must be provided prior to commencement at Consultant level
- Evidence of Fellowship with the Royal Australasian College of Physicians (RACP) or equivalent must be provided prior to commencement
- Provision of the minimum identity proofing requirements
- Successful Criminal Record Screening Clearance
- Successful Pre-Employment Health Assessment
- Successful WA Health Integrity Check
- Successful Working With Children Check
- Evidence of a current C or C-A Class driver's licence or other specialised licence class Allowances

